

04-15

2015 RESOLUTION ADOPTING A CITY PROPERTY DISPOSITION LIST

WHEREAS, the City owns numerous properties with possible uses and/or development potential that may be utilized to attain community goals;

WHEREAS, ongoing strategic planning of municipal assets is in the best interest of the public;

WHEREAS, City Council's goal for an engaged and informed citizenry is a product of transparent government and public notification;

WHEREAS, the growing demand for City services is subject to continual evaluation of asset management.

NOW, THEREFORE BE IT RESOLVED by the City Council of Park City, as follows:

SECTION 1. CITY PROPERTY DISPOSITION LIST. Park City adopts the 'Property disposition list' as attached hereto as Exhibit A.

This Resolution hereby constitutes public notice that the properties listed herein are intended for sale if so noted and the City Council may meet in closed session as allowed by state law to discuss the best possible terms of a potential sale. Any final approval of a sale by the City Council must be done at a regular, open meeting.

SECTION 2. EFFECTIVE DATE. This Resolution shall take effect upon adoption.

PASSED AND ADOPTED this sixteenth day of April 16, 2015.


PARK CITY MUNICIPAL CORPORATION


Mayor Jack Thomas

Attest:


Marci Heil, City Recorder

Approved As to form:


Mark D. Harrington, City Attorney

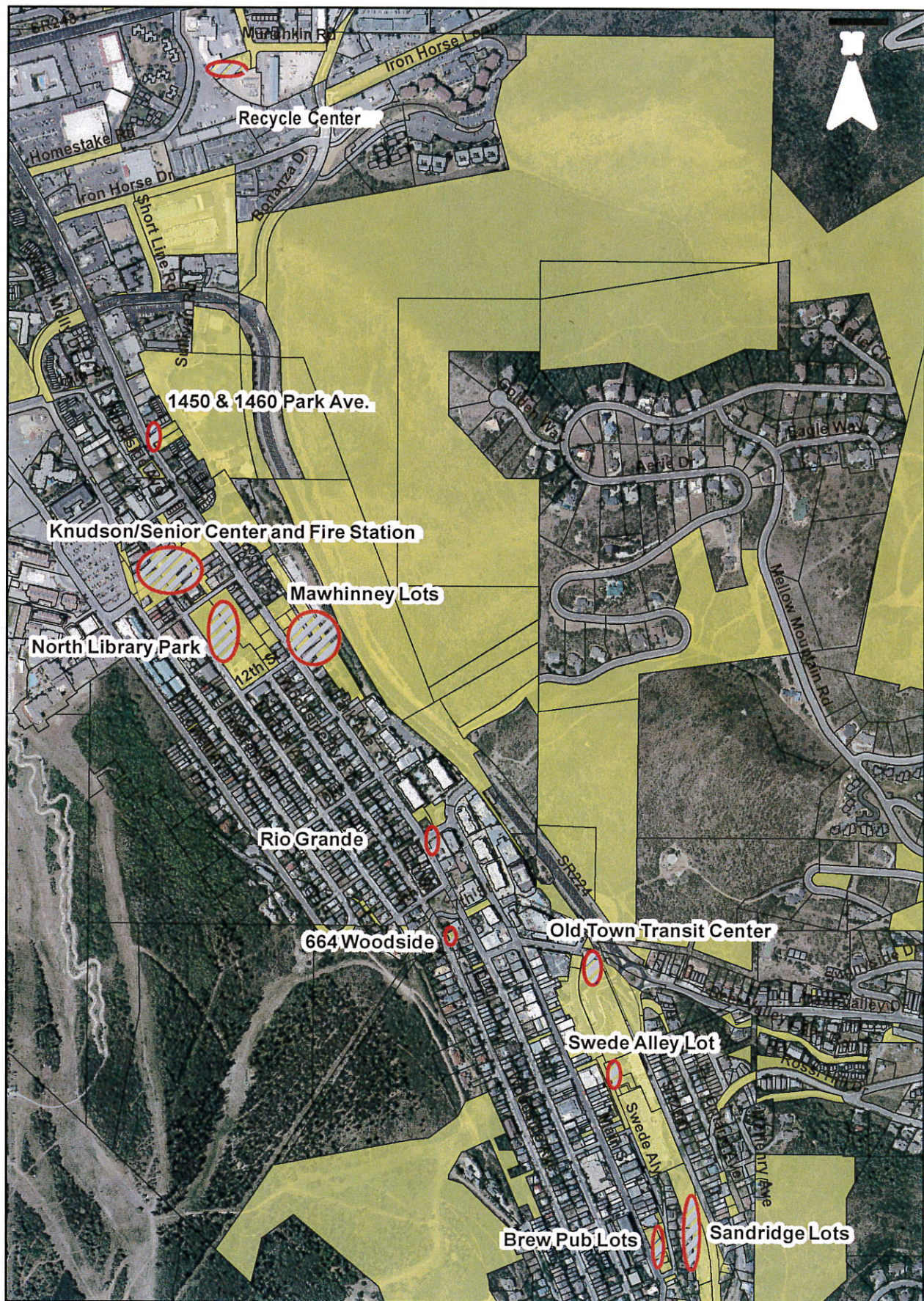


**Exhibit A- 2015 City Property Disposition
Resolution**

Property/Parcels/Acres	Potential Use
Bango-Wortley/Gordo Parcels PC-9-95-X, PC-9-95-M-X, PC-9-95-J-X, PC-9-95-F-X, PC-9-95-G-X, PC-9-95-H-X, PC-9-95-L-X, PC-9-95-K-X, PC-9-95-1-X, PC-9-95-B-X (approx. 14 acres)	Hold/Sell/Trade; PW Storage; Municipal Facility; Inside Soils Ordinance
Woodside/Empire/Lowell NGS-2-X, PC-98-X, PC-322-X, PC-325-X, PC-364-B-X (.07 acre)	Hold/Trade/Sell/Easements
Park and Ride SS-87 (16.25 acres)	Recreation; City Facilities
Brew Pub Parking Lots PC-263-X, PC-264-1-X, PC-265-X, PC-266-X, PC-563-X, PC-261-B-X, PC-563-A-X (.5 acre)	Hold/Trade/Sell; Parking; Park; Inter-modal municipal oriented transit, Housing (Gondola); Public Gathering Space/Plaza; Inside Soils Ordinance
Old Town Transit Center Marsac Transit Center Sub., PC-476-A-X, PC-476-B-X, PC-730-B-X, PC-426-X, PC-730-A-X (approx. 4 acres)	Inter-modal transit oriented use (gondola, multi-modal transportation/housing); Inside Soils Ordinance
SR-224 Kiosk (.44 acres)	Trailhead Parking
Mawhinney Lots SA-369-X, SA-370-X, SA-371-X, SA-372-X, SA-360-A (1.5 acre)	Skate Park; Parking; City Park; Affordable Housing; Inside Soils Ordinance
Swede Alley/Main Street Lot MPS-3-AM-X, PC-304-A-X, PC-730-S-X, CARR-B-X, PC-127-X, PC-305-X, MAR-SWED-300-X, PC-147-X, PC-148-C-X (.4 acre)	Hold/ Sell/Trade; Parking; Park; Main Street Improvements
Triangle Parcel SS-57-1-B-X (111 acres)	Hold/Sell/Trade; PW Facility; Open Space; Municipal Facility; Recycle Center
North 40 Parking area PCA-98-C-1-X (73 acres)	Recreation, Affordable Housing, City Facility, Parking
IHC Lot 5 IHPCMC-5-2AM-X (15 acres)	Hold/Sell/Trade; Recreation; Trails, City Facilities
Naniola/Kivett SS-29-C-X, SS-21-A-X (60 acres)	Hold/Sell/Trade
North Library SA-68-X, SA-72-X (2.5 acres)	Park, Recreation, Affordable Housing
1353 & 1333 Park Ave. Fire Station/Miners Hospital/City Park SA-273-X (.5 acre)	Hold/Sell/Trade; Lower RDA Plan Development; partially inside soils ordinance
Knudson (portions of SA-200, SA-201, SA-202-A-1) 14,624 sq/ft. per purchase agreement), SA-402-C-X	Hold/Sell/Trade; Lower RDA Plan Development

1361 Woodside Ave. Senior Center and parking SA-265-A-X (1.5 acres)	Hold/Sell/Trade; Lower RDA Plan Development
1450 & 1460 Park Ave. Co-Housing RPS-1, RPS-2	Hold/Sell/Trade; Co-Housing Project; Affordable Housing; Inside Soils Ordinance
1951 Woodbine Way Recycling Center/BoPa SS-224-X, SA-224-Z-X (.5 acre)	Hold/Sell/Trade; Bonanza Park Redevelopment; Inside Soils Ordinance
Pace Parcels SS-28-A-1-X, SA-28-A-X (110 acres)	Hold/Sell/Trade; Open Space; Recreation; Snow Storage; Municipal Facility; Agricultural
Sandridge Parcels PC-730-2-X, PC-730-G-X (2 acres)	Hold/Sell/Trade; Parking; Gondola Base; Inside Soils Ordinance
PC Heights Parcel (24 acres)	Hold/Sell/Trade; Open Space; Recreation; Snow Storage; Agricultural
Olympic Plaza (3 acres) SA-224-H-1-X, SCCS-D-X	Hold/Sell/Trade; Walkability and UDOT projects
SR-224 Parcels SA-224-L-9-X, SA-224-L-8-X, SA-224-L-10-X, SA-254-1-X, PAL-1-A-X	Hold/Sell/Trade; Walkability and UDOT projects
Daly Parking PC-259-X	Trade/Lease/Easements
Ontario Remnants PC-509-X, PC-440-B, PC-440-B	Hold/Sell/Trade/Lease/Easements
Wyatt Earp Prospector Park PCA-3-3107-PC-X, PCA-98-B-X	Hold/Sell/Trade/Lease/Easements
Silver Summit Water Tank SS-57-2-A	Hold/Sell/Trade/Lease/Easements
Woodside Gulch PC-S-55-X	Hold/Sell/Trade/Lease/Easements
City Rights of Way as noted in Streets Master Plan	Hold/Sell/Trade/Lease/Easements
City Prescriptive Easements	Hold/Trade/Easements

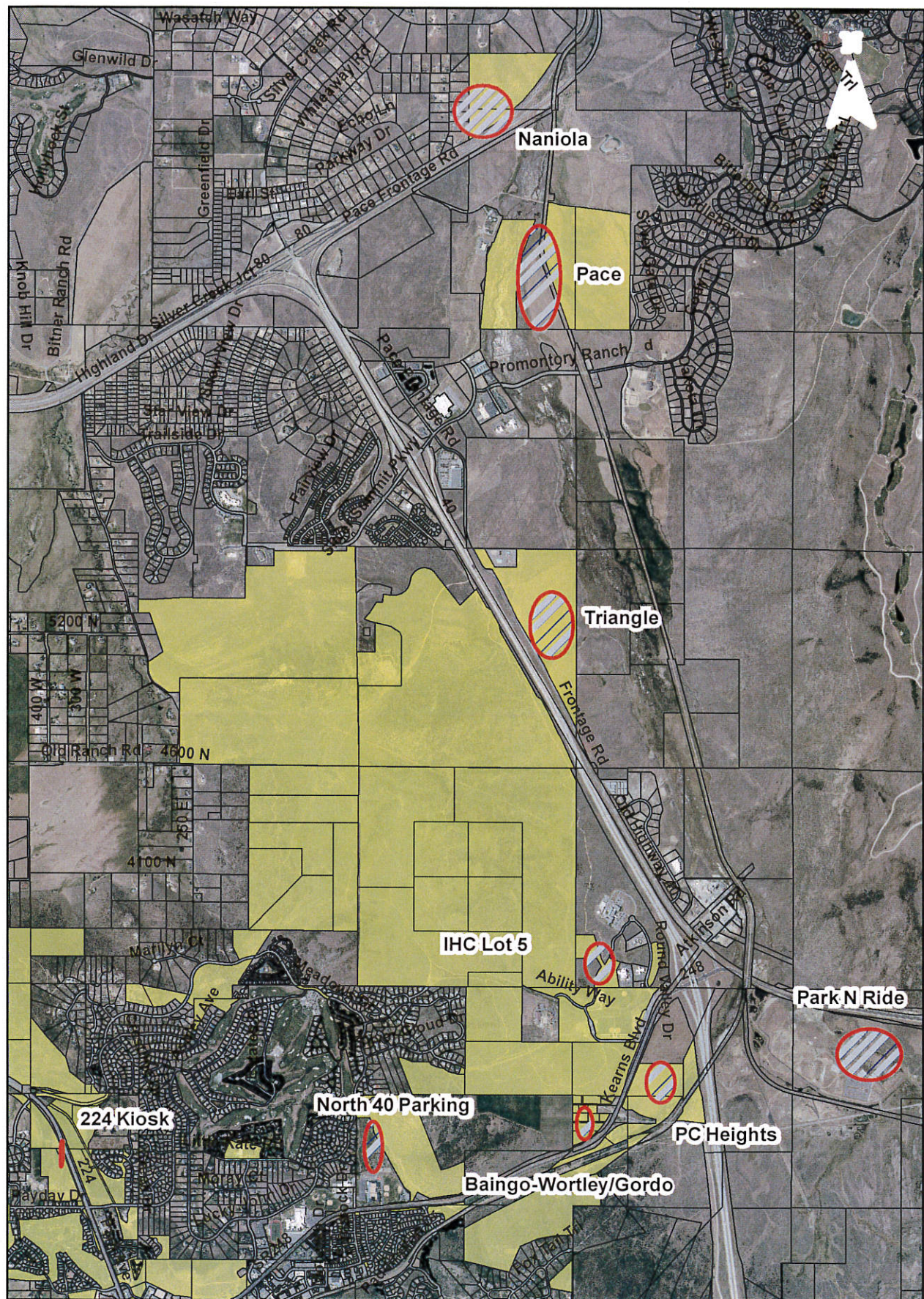
2015 City-Owned Disposition Properties I



0 0.075 0.15 0.3 Miles



2015 City-Owned Disposition Properties II



0 0.325 0.65 1.3 Miles

