



# SNOW PARK VILLAGE @ DEER VALLEY RESORT

SEPTEMBER 22, 2021



DEER VALLEY RESORT

**TABLE OF CONTENTS**

---

- STAFF REQUESTED INFORMATION 3
- RENDERED PARKING GARAGE ELEVATIONS 5-7
- EXTERIOR FINISH MATERIALS BOARD 8
- TRANSIT AND MOBILITY CENTER PLANS AND PROGRAM 10-11
- FUTURE EVENT CENTER PROGRAMMATIC DIAGRAM & RENDERING 13-14
- ACTIVE TRANSPORTATION PLAN 16
- PARKING ALLOCATION PLANS 18
- SNOW PARK LODGE DROP-OFF 20
- SIGNAGE AND WAYFINDING EXHIBITS 22-23
- SERVICE AREAS 25

## STAFF REQUESTED INFORMATION SUMMARY

---

### Excerpt of Requested Information from 8/25/2021 Staff Report

#### SUMMARY

Based on this preliminary review, the Planning Department requests the following additional information:

1. Clarify how general ski traffic will be restricted from utilizing Deer Valley Drive West. SEE SIGNAGE AND WAYFINDING EXHIBITS 9/22/2021
2. An Active Transportation Plan showing Trail Connections and Parking. SEE ACTIVE TRANSPORTATION EXHIBIT + TO BE PROVIDED DURING TRANSPORTATION FOCUSED MEETING
3. Additional details on the proposed reconstructed Y intersection. TO BE INCLUDED DURING TRANSPORTATION FOCUSED MEETING
4. Additional information analyzing whether the entrance to level P1 will create congestion and conflicts with public transportation. SEE PARKING ALLOCATION EXHIBIT 9/22/2021
5. Additional elevations of the proposed garage. SEE BUILDING ELEVATION EXHIBITS 9/22/2021
6. A phasing plan for the overall project. TO BE INCLUDED DURING CONSTRUCTION FOCUSED MEETING
7. Details of the Transit and Mobility Hub including a list of proposed amenities, plans and elevations (including how ADA access will work), and a geometric plan showing the turning radius is sufficient for HVT and Park City Transit buses with bike racks. SEE TRANSIT AND MOBILITY HUB EXHIBIT 9/22/2021
8. Details about the Community Event Center. SEE EVENT CENTER EXHIBIT 9/22/2021
9. A code-based rationale for allowing additional Support Commercial Space in Phase 2 of the project.
10. Further analysis of the proposed parking exceptions based on the MPD requirements as set out in LMC 15-6-5 (E) (a-g).
11. A plan indicating where bike parking will be located on site. SEE ACTIVE TRANSPORTATION EXHIBIT 9/22/2021
12. A formal Parking and TDM Plan. TO BE PROVIDED DURING TRANSPORTATION FOCUSED MEETING

\*DEFERRED TO FUTURE PLANNING COMMISSION MEETINGS

### Excerpt of Requested Information from 9/22/2021 Staff Report

#### SUMMARY

Based on this preliminary review, the Planning Department requests the following information (in addition to the previously requested information in the last Staff Report):

1. A photo simulation or 3D rendering of the proposed garage from 3-4 neighborhood vantage points. WILL BE PROVIDED TO STAFF IN FUTURE SUBMITTAL
2. A phasing plan for the overall project. DEFERRED TO CONSTRUCTION FOCUSED MEETING
3. Details of the Transit and Mobility Hub including a list of proposed amenities, plans and elevations (including how ADA access will work), and a geometric plan showing the turning radius is sufficient for HVT and Park City Transit buses with bike racks. SEE TRANSIT AND MOBILITY HUB EXHIBIT 9/22/2021
4. Details about the Community Event Center. SEE EVENT CENTER EXHIBIT 9/22/2021
5. A code-based rationale for allowing additional Support Commercial Space in Phase 2 of the project.
6. Detailed landscape, lighting, snow storage areas, and plans for service and delivery areas for Phase 1 should be submitted for the CUP. SEE SERVICE AREAS EXHIBIT 9/22/2021. DETAILED LANDSCAPE, LIGHTING AND SNOW STORAGE PLANS TO BE PROVIDED TO STAFF IN DEFERRED SUBMITTAL.

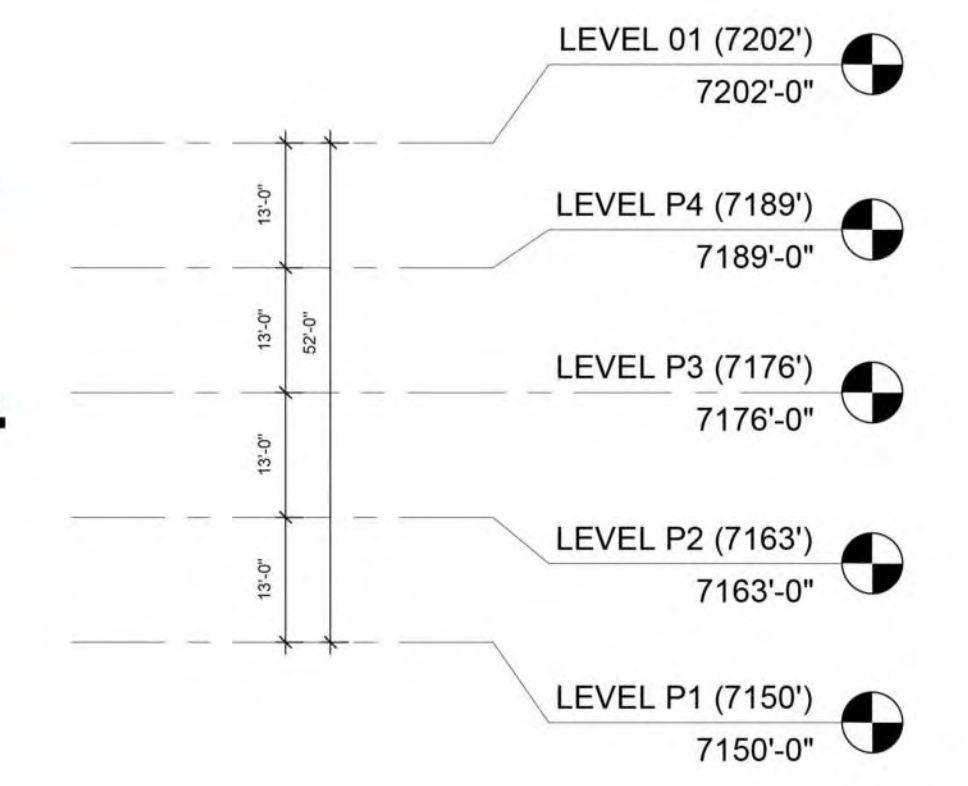
\*DEFERRED TO FUTURE PLANNING COMMISSION MEETINGS

---

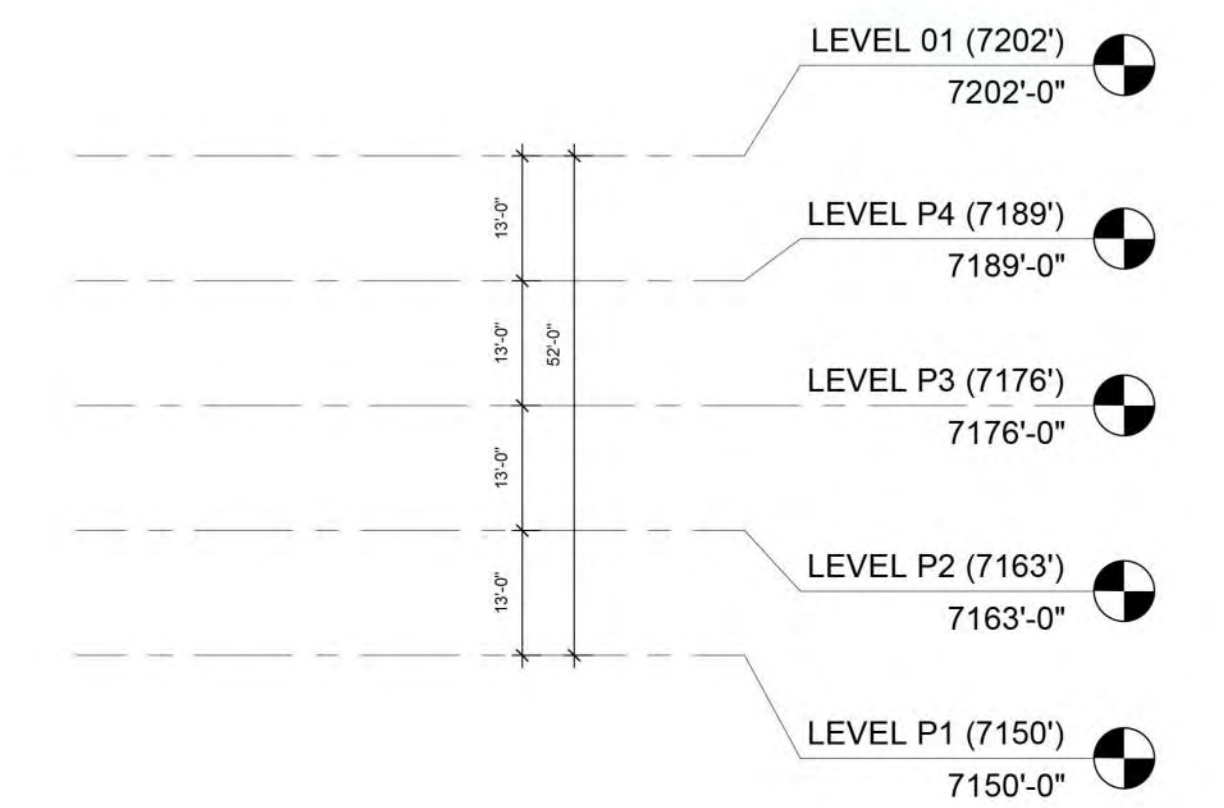
# RENDERED BUILDING ELEVATIONS & EXTERIOR FINISHES

# PARKING GARAGE ELEVATIONS

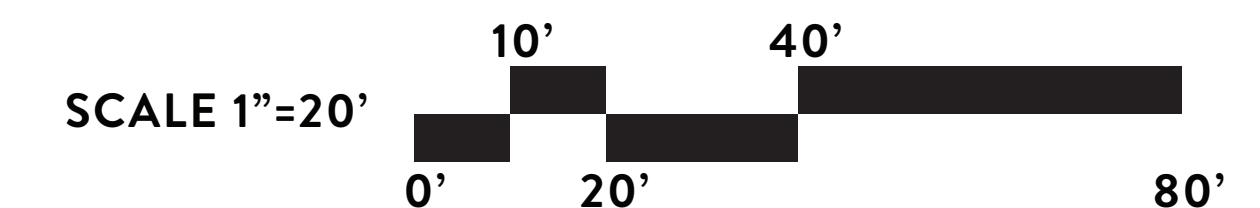
- TOTAL FINISH SURFACE SQUARE FOOTAGE OF PROPOSED PARKING STRUCTURE: 17,626 SF
- PARKING GARAGE SURFACE COVERED BY FUTURE BUILDING: 12,815 SF 73%
- PARKING GARAGE FINISH SURFACE LEFT EXPOSED: 4,811 SF 27%



NORTH OVERALL ELEVATION (FROM DOE PASS RD - LOOKING SOUTH)

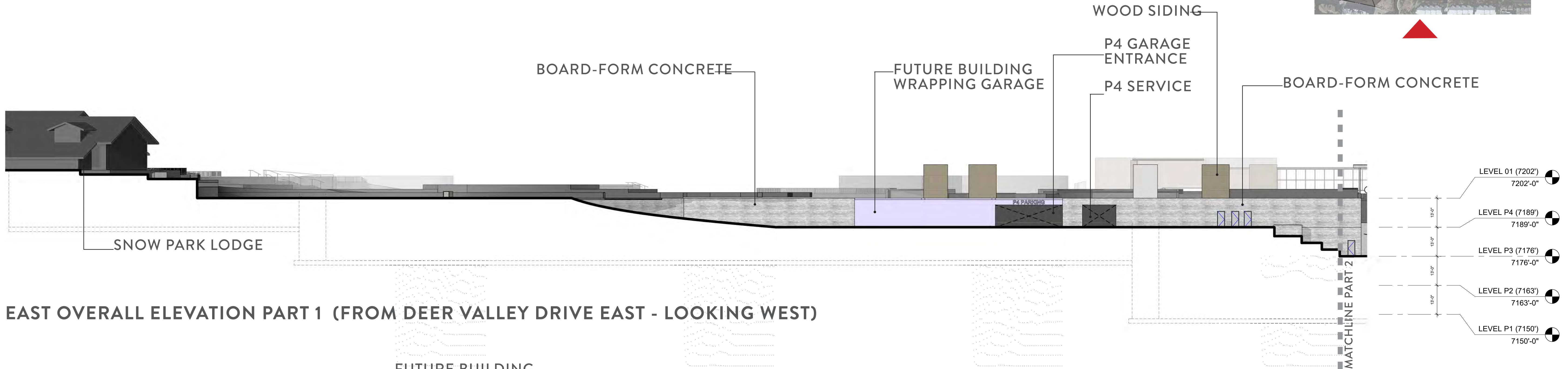


SOUTH OVERALL ELEVATION - (FROM DEER VALLEY RESORT - LOOKING NORTH)

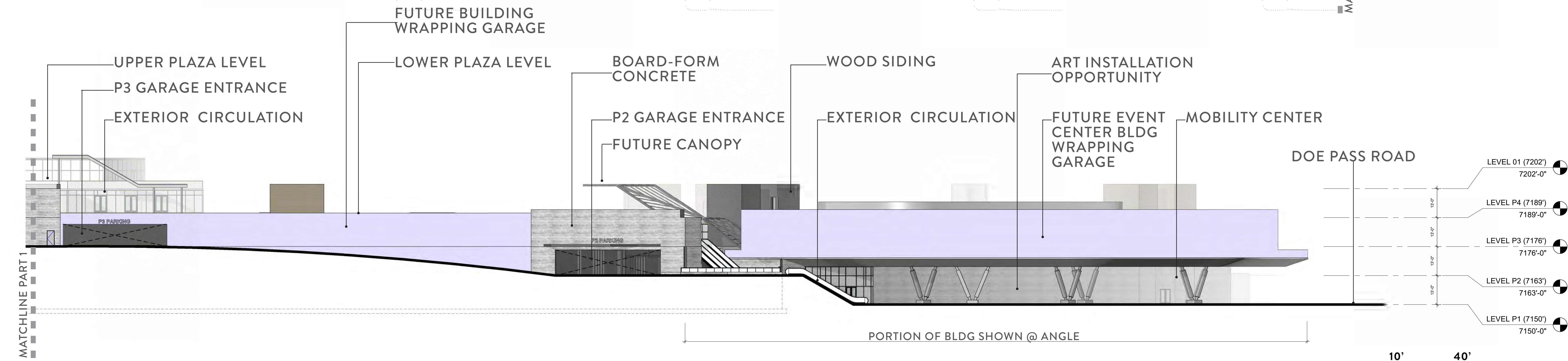


# PARKING GARAGE EAST ELEVATION

- TOTAL FINISH SURFACE SQUARE FOOTAGE OF PROPOSED PARKING STRUCTURE: 9,010 SF
- PARKING GARAGE SURFACE COVERED BY FUTURE BUILDING: 4,320 SF 48%
- PARKING GARAGE FINISH SURFACE LEFT EXPOSED: 4,690 SF 52%



## EAST OVERALL ELEVATION PART 1 (FROM DEER VALLEY DRIVE EAST - LOOKING WEST)



## EAST OVERALL ELEVATION PART 2 (FROM DEER VALLEY DRIVE EAST - LOOKING WEST)

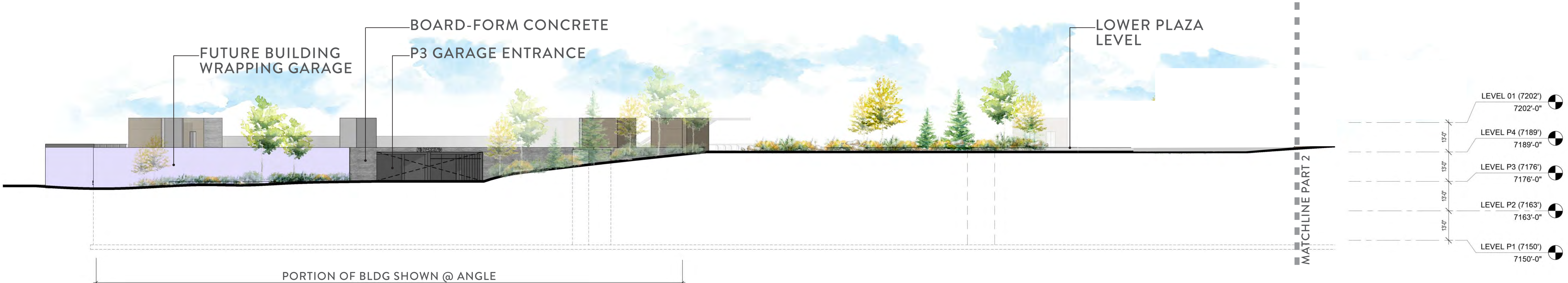


SEPTEMBER 22, 2021

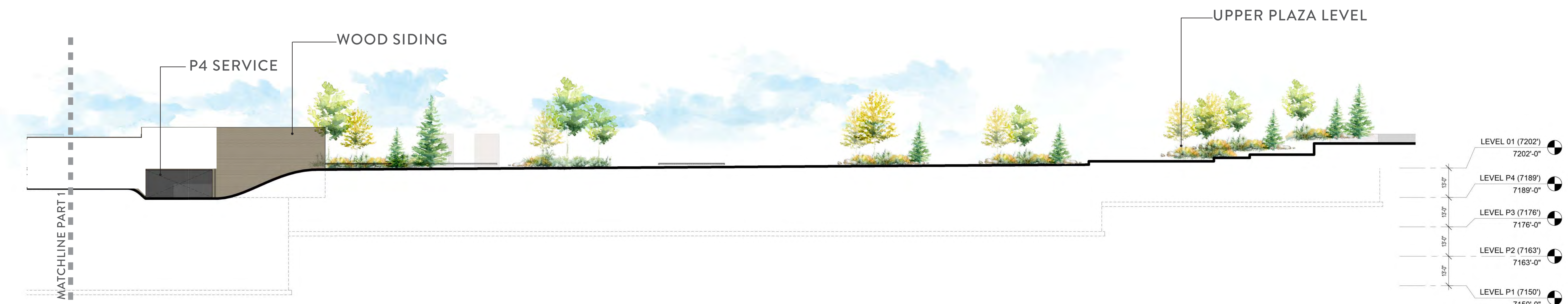
SNOW PARK @ DEER VALLEY RESORT

# PARKING GARAGE WEST ELEVATION

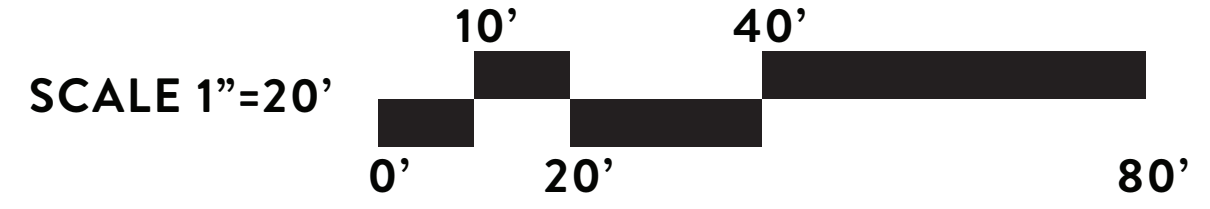
- TOTAL FINISH SURFACE SQUARE FOOTAGE OF PROPOSED PARKING STRUCTURE: 4,503 SF
- PARKING GARAGE SURFACE COVERED BY FUTURE BUILDING: 2,260 SF 50%
- PARKING GARAGE FINISH SURFACE LEFT EXPOSED: 2,243 SF 50%



WEST OVERALL ELEVATION PART 1 (FROM DEER VALLEY DRIVE WEST - LOOKING EAST)



WEST OVERALL ELEVATION PART 2 (FROM DEER VALLEY DRIVE WEST - LOOKING EAST)

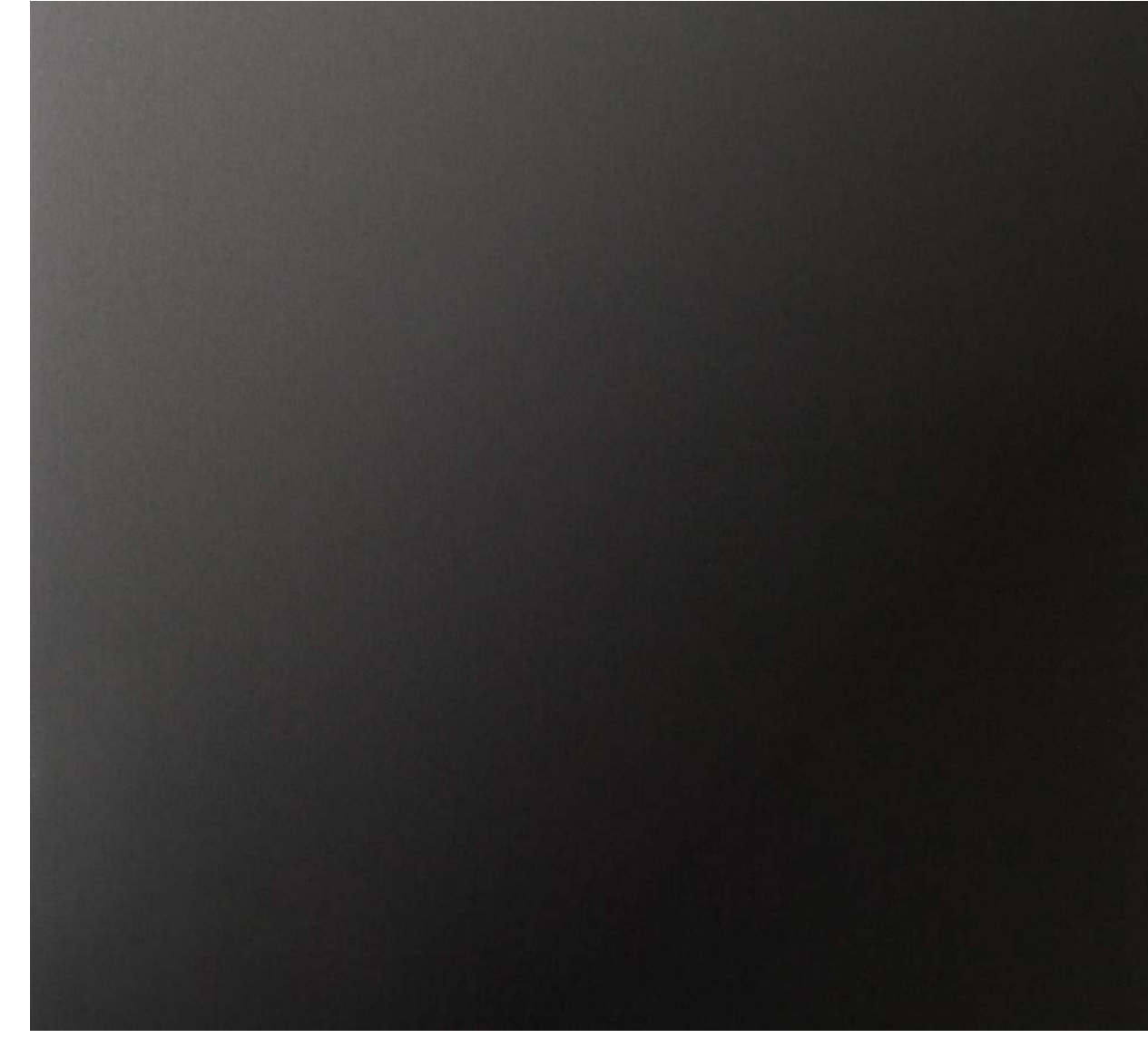




BOARD-FORM CONCRETE

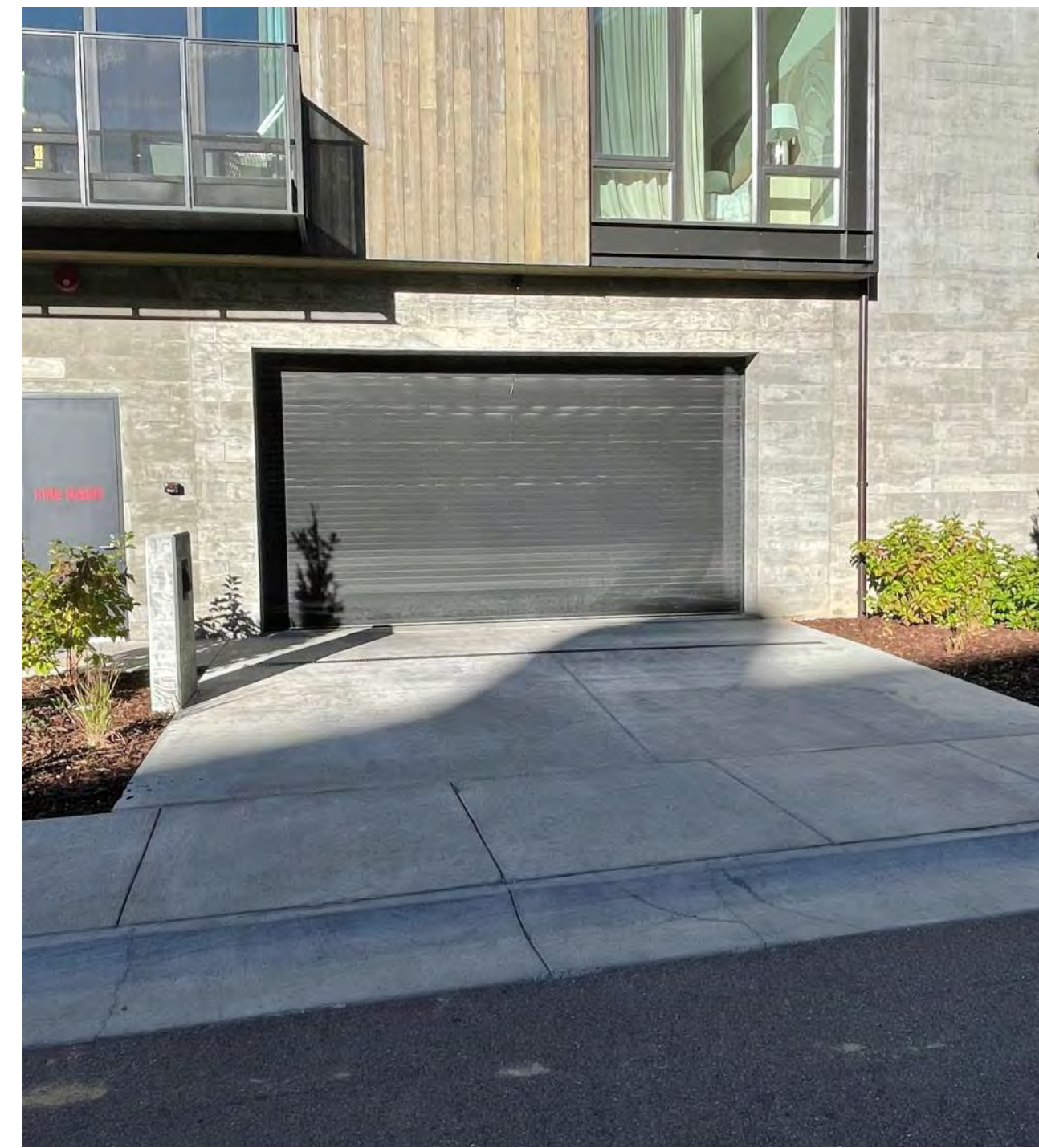


VERTICAL WOOD SIDING



BLACK ANODIZED METAL

PROPOSED FINISH MATERIALS



RECENT EXAMPLES OF MATERIALS USED IN PARK CITY



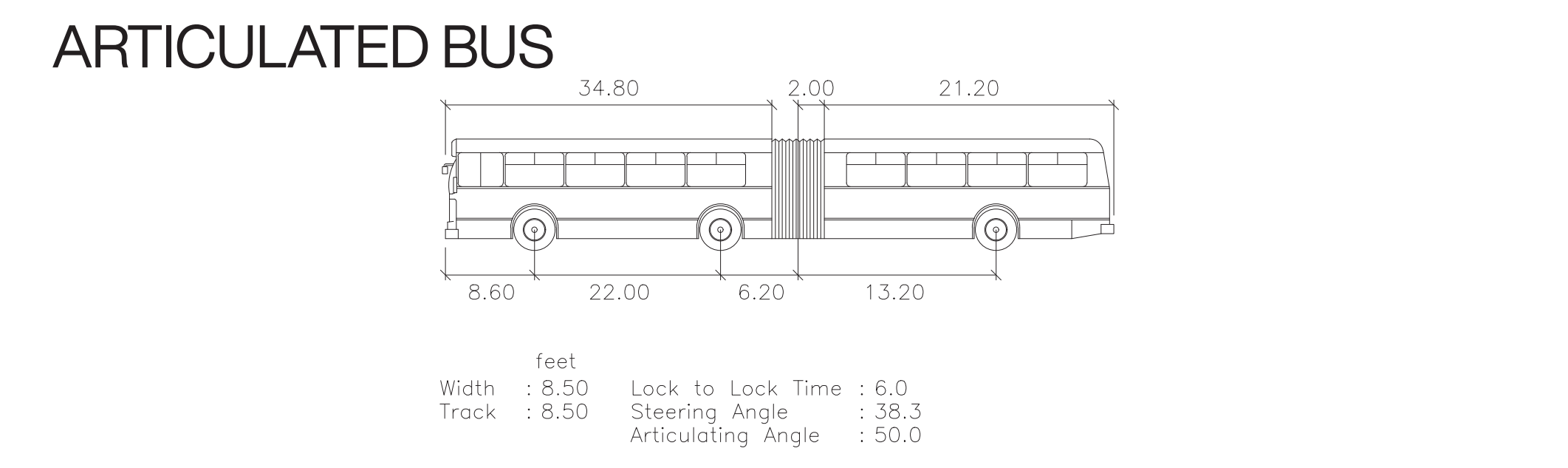
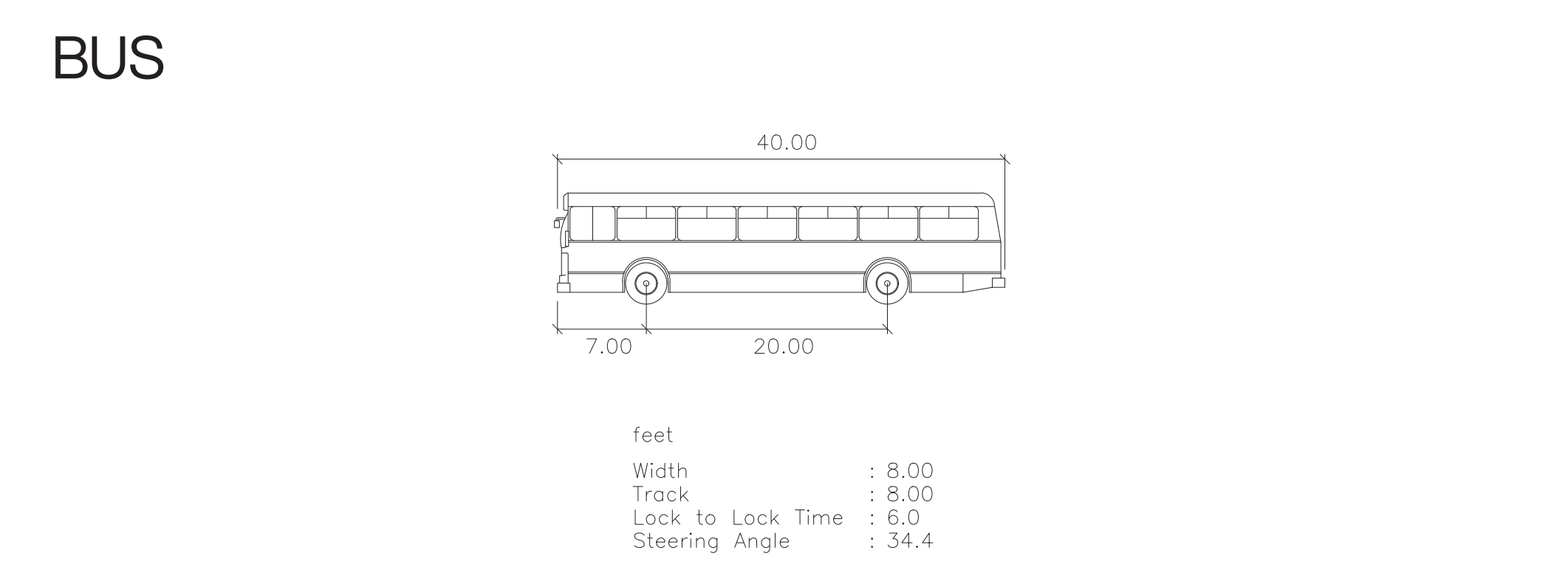
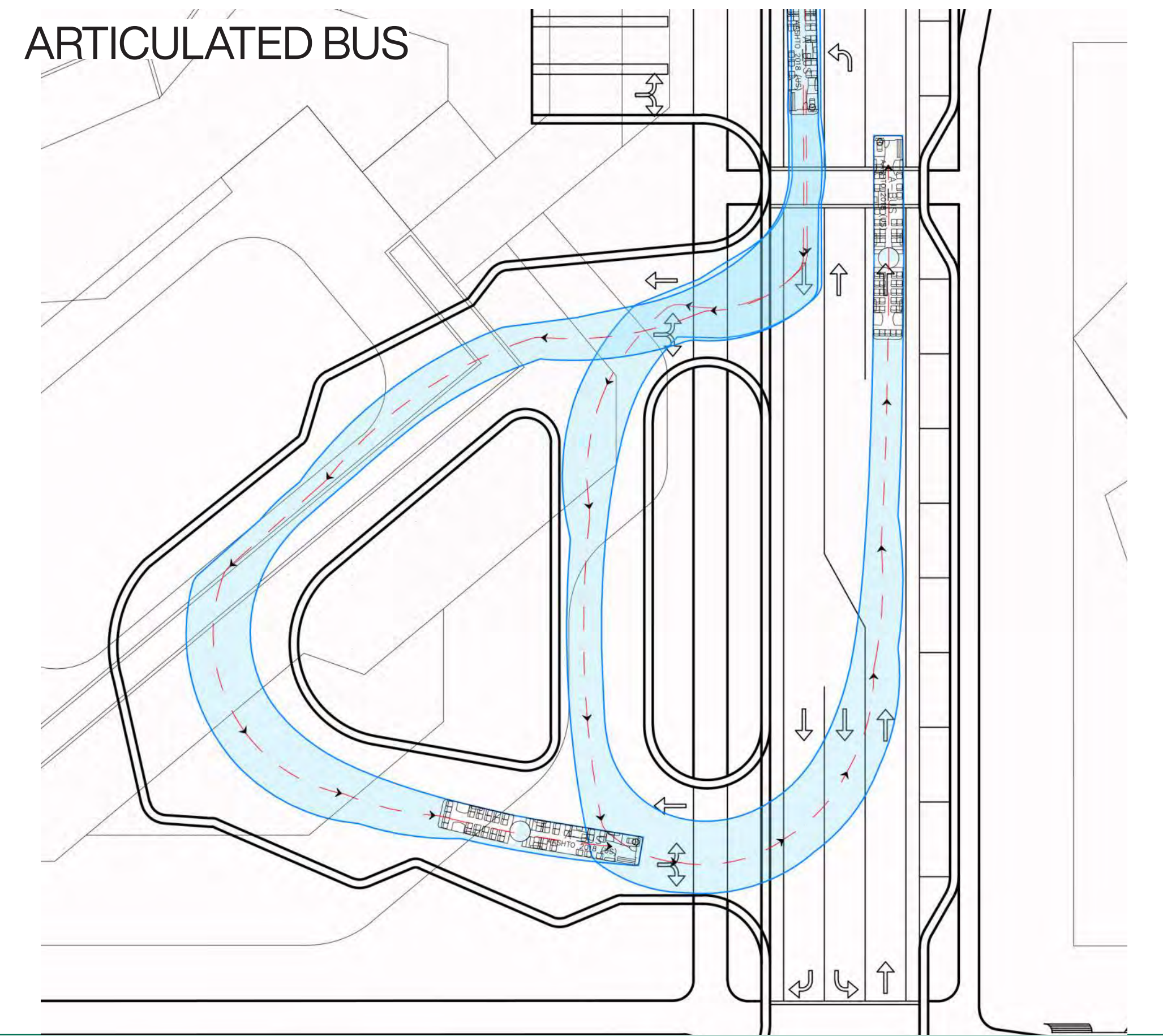
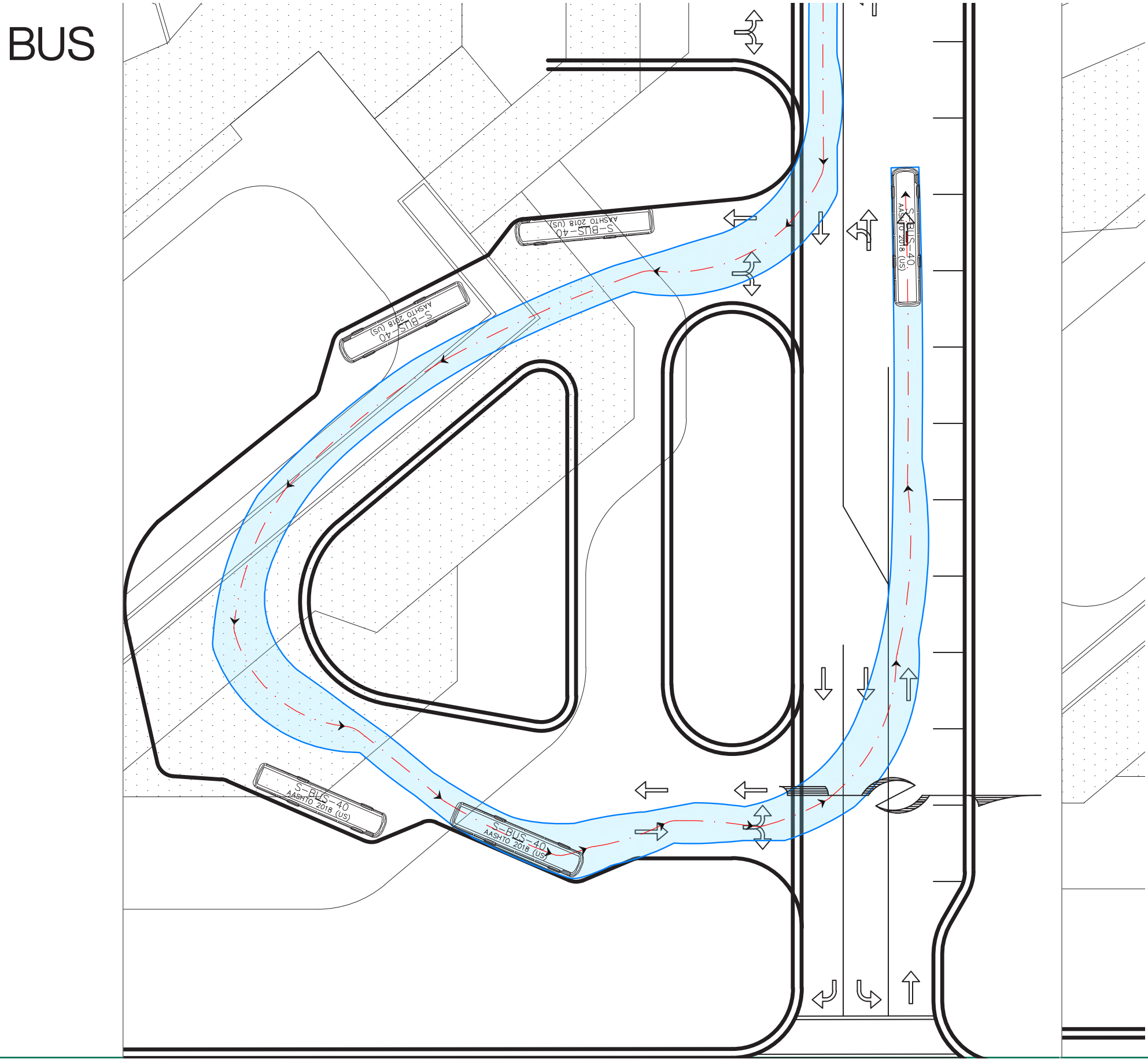
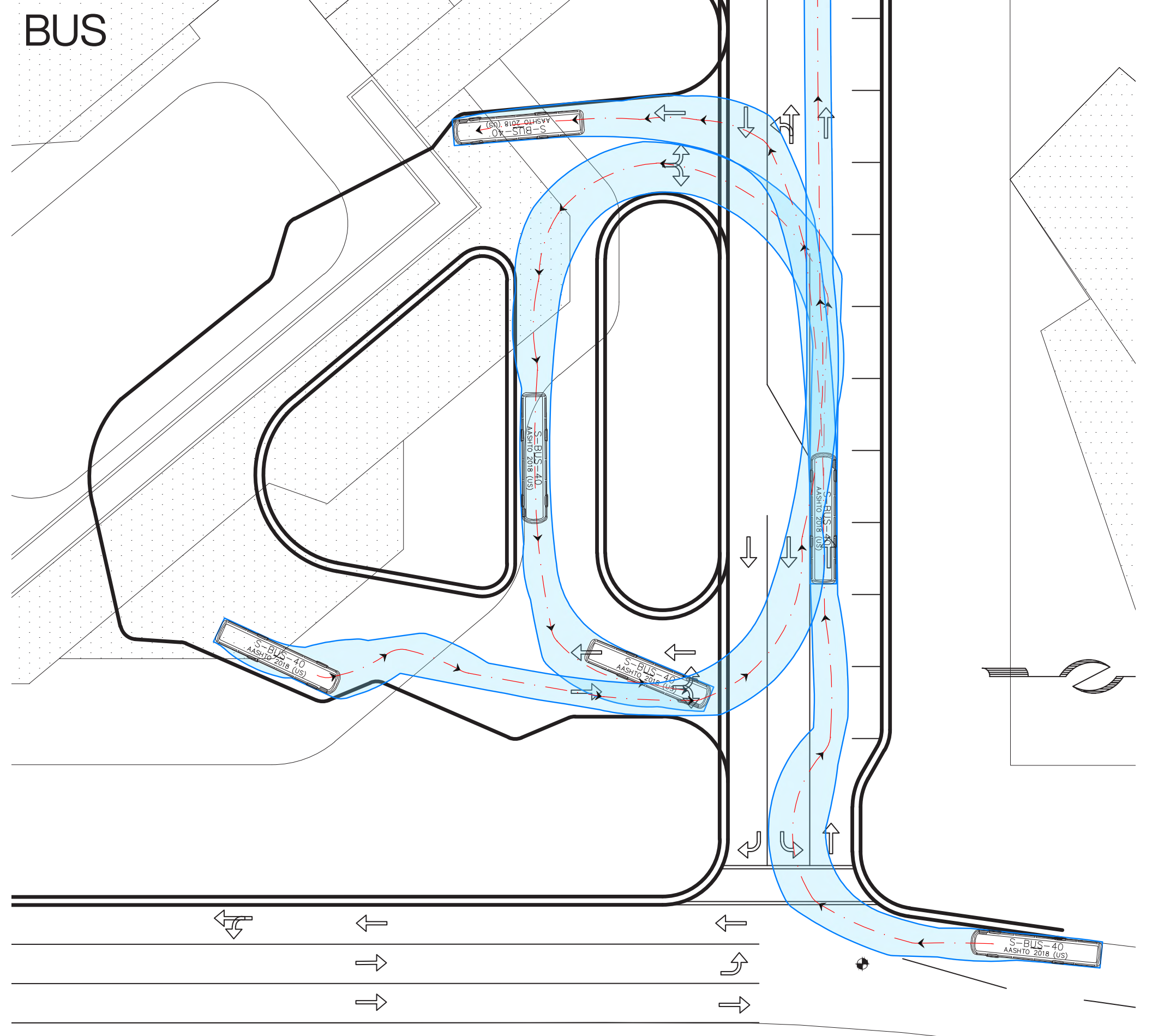
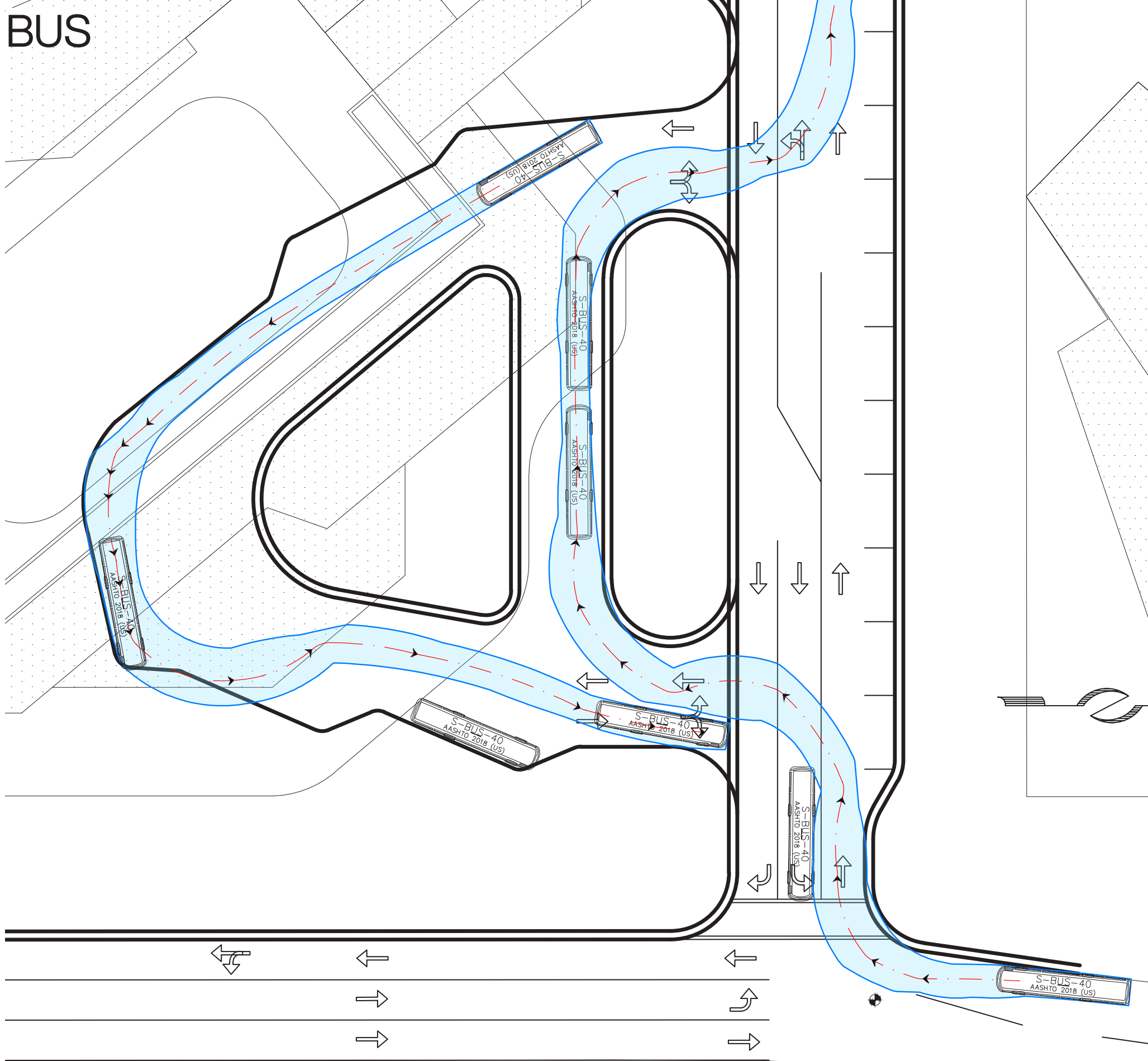
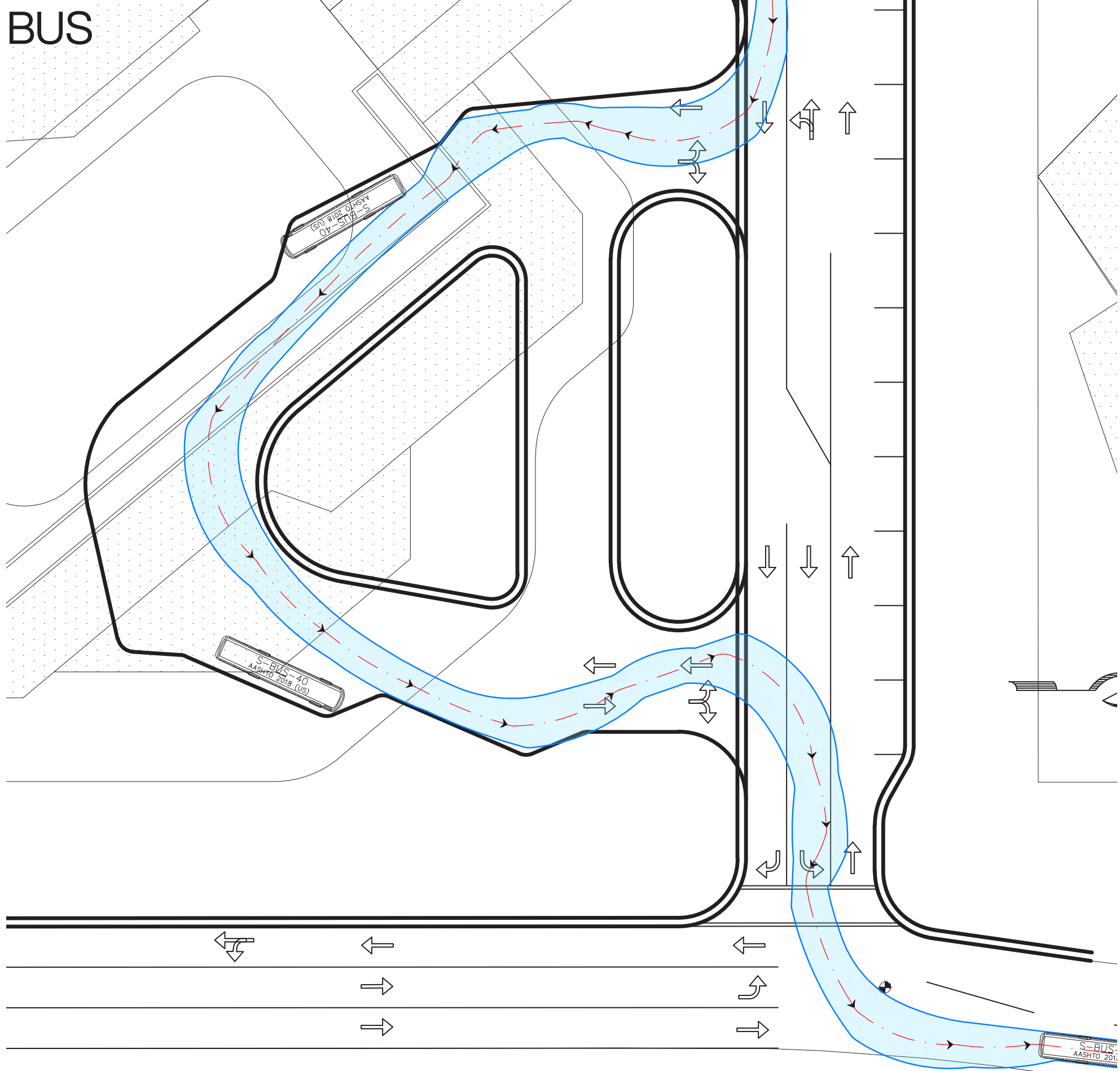
---

# TRANSIT AND MOBILITY CENTER PLANS & PROGRAM

# TRANSIT AND MOBILITY CENTER CONCEPTUAL FLOOR PLAN & PROGRAM



TRANSIT AND MOBILITY CENTER - BUS AND ARTICULATED BUS TURNING MOVEMENTS



---

# FUTURE EVENT CENTER PROGRAMMATIC DIAGRAM

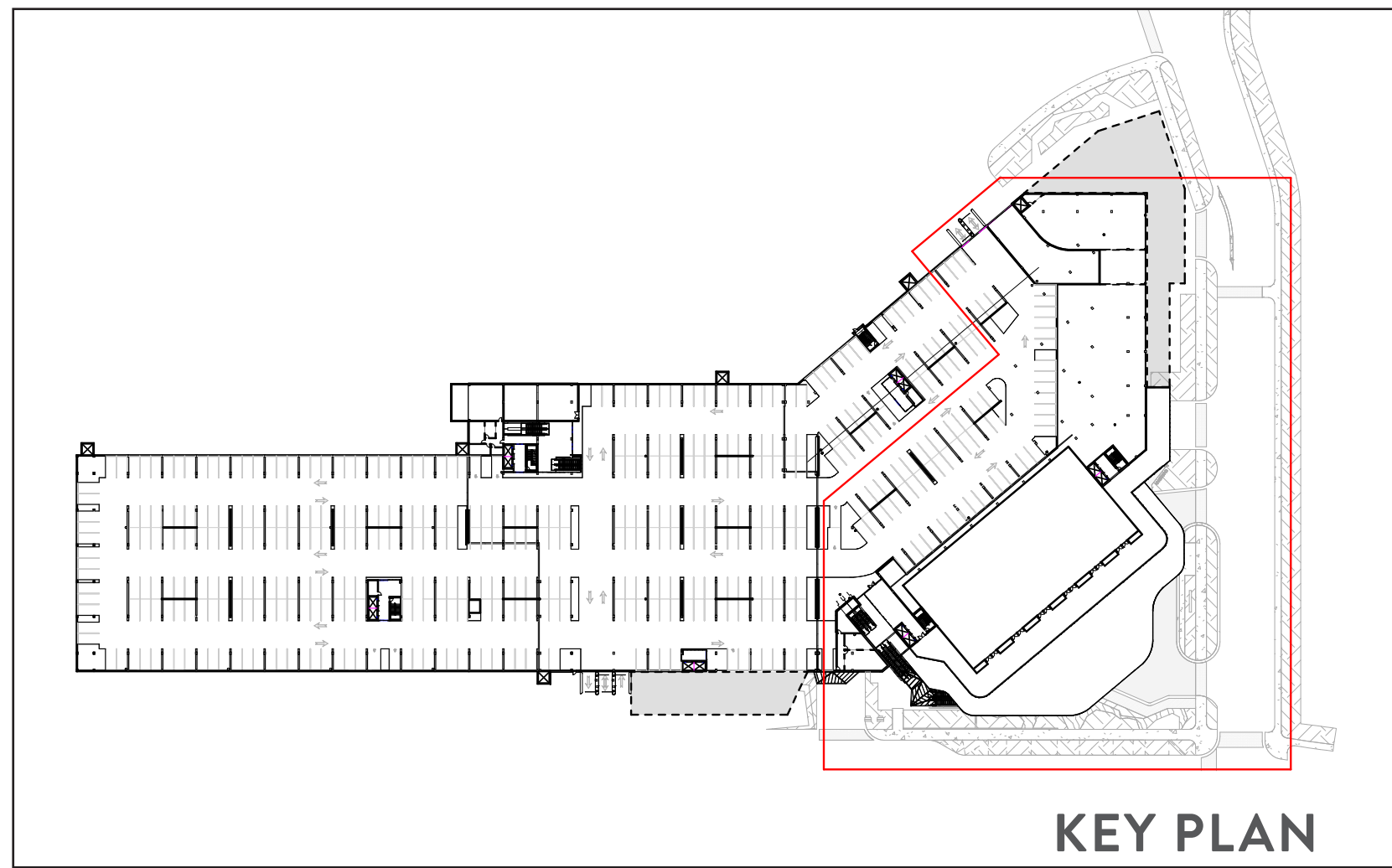
# FUTURE EVENT CENTER PROGRAMMATIC DIAGRAM

**EVENT CENTER SUMMARY:**

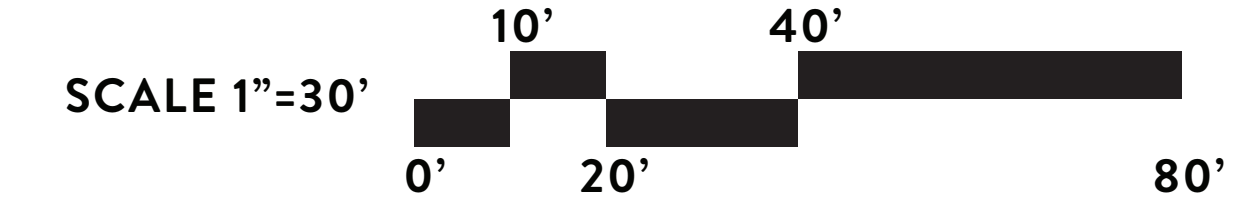
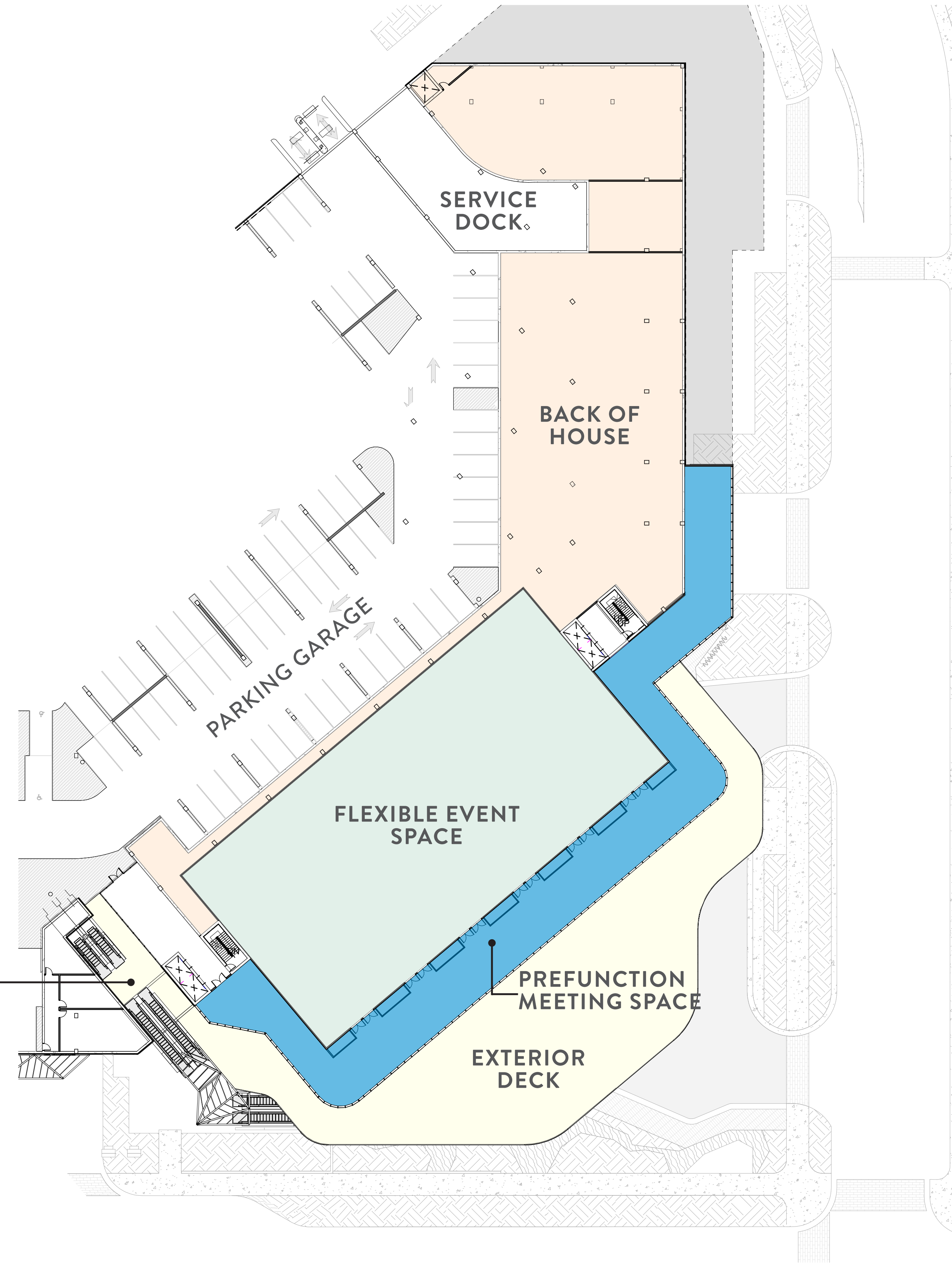
- FLEXIBLE EVENT SPACE: 20,000 SF (20 UE)
- PREFUNCTION/MEETING SPACE: 8,000 SF (8 UE)
- BACK-OF-HOUSE: 10,000 SF

**ROOFTOP ACTIVITY DECK:**

- MULTIPURPOSE PLAZA
- ICE RINK
- TERRACED AMPHITHEATER SEATING



CIRCULATION THROUGH  
PARKING LEVELS, PLAZA  
& TRANSIT & MOBILITY  
CENTER



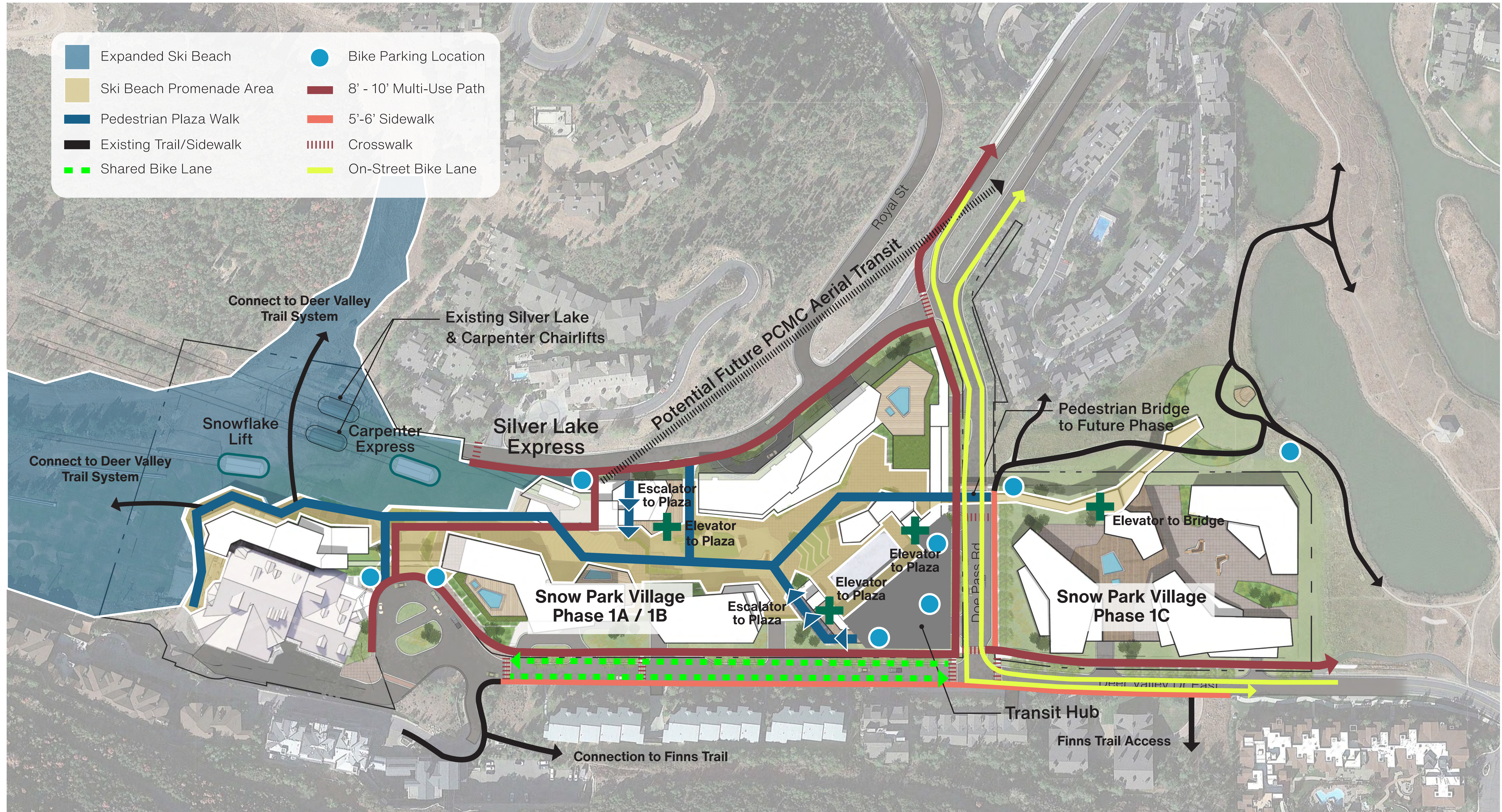
ARTISTIC CONCEPTUAL RENDERING OF FUTURE TRANSIT & MOBILITY AND EVENT CENTERS



---

# ACTIVE TRANSPORTATION PLAN

ACTIVE TRANSPORTATION MASTER PLAN

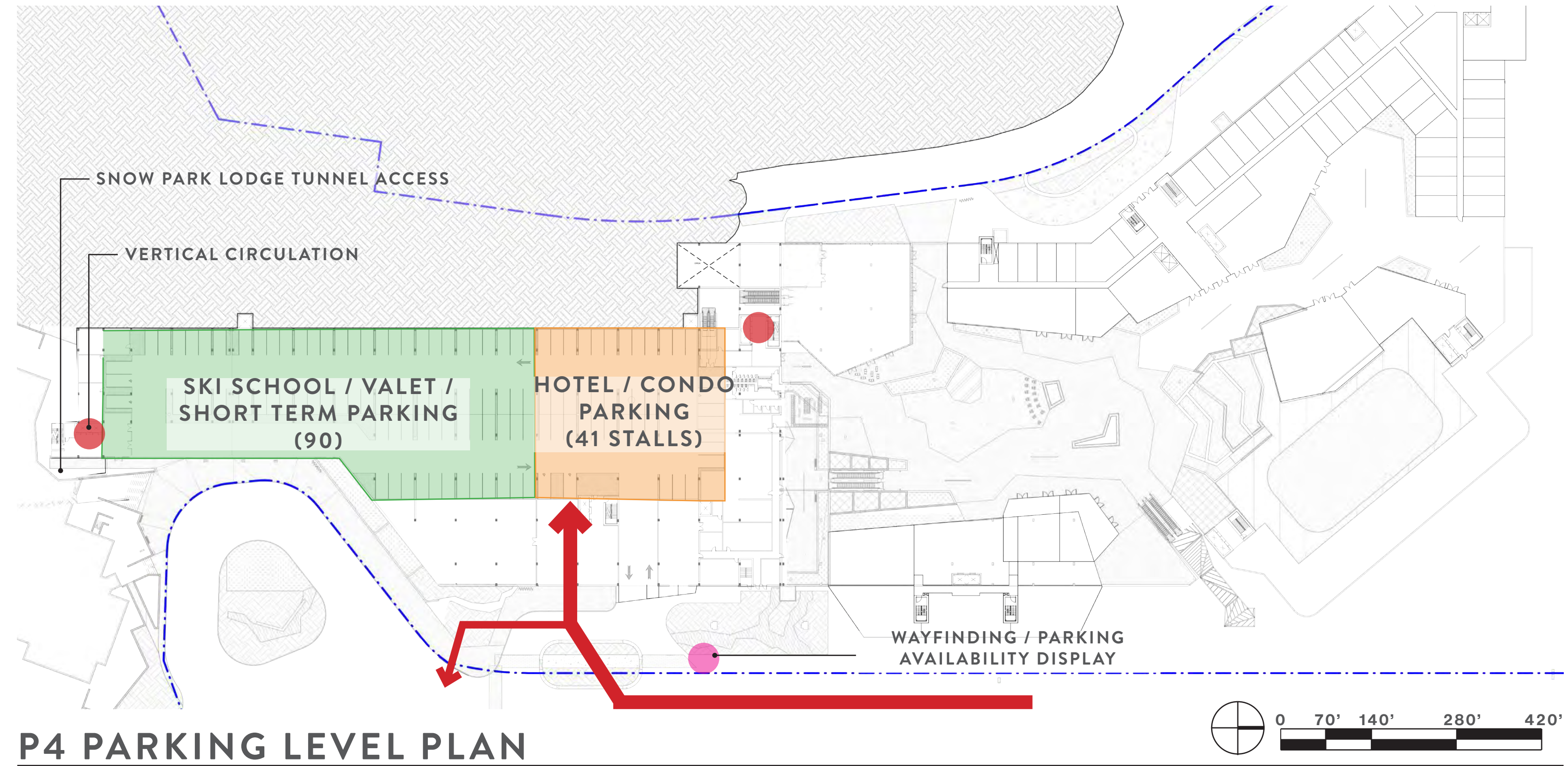
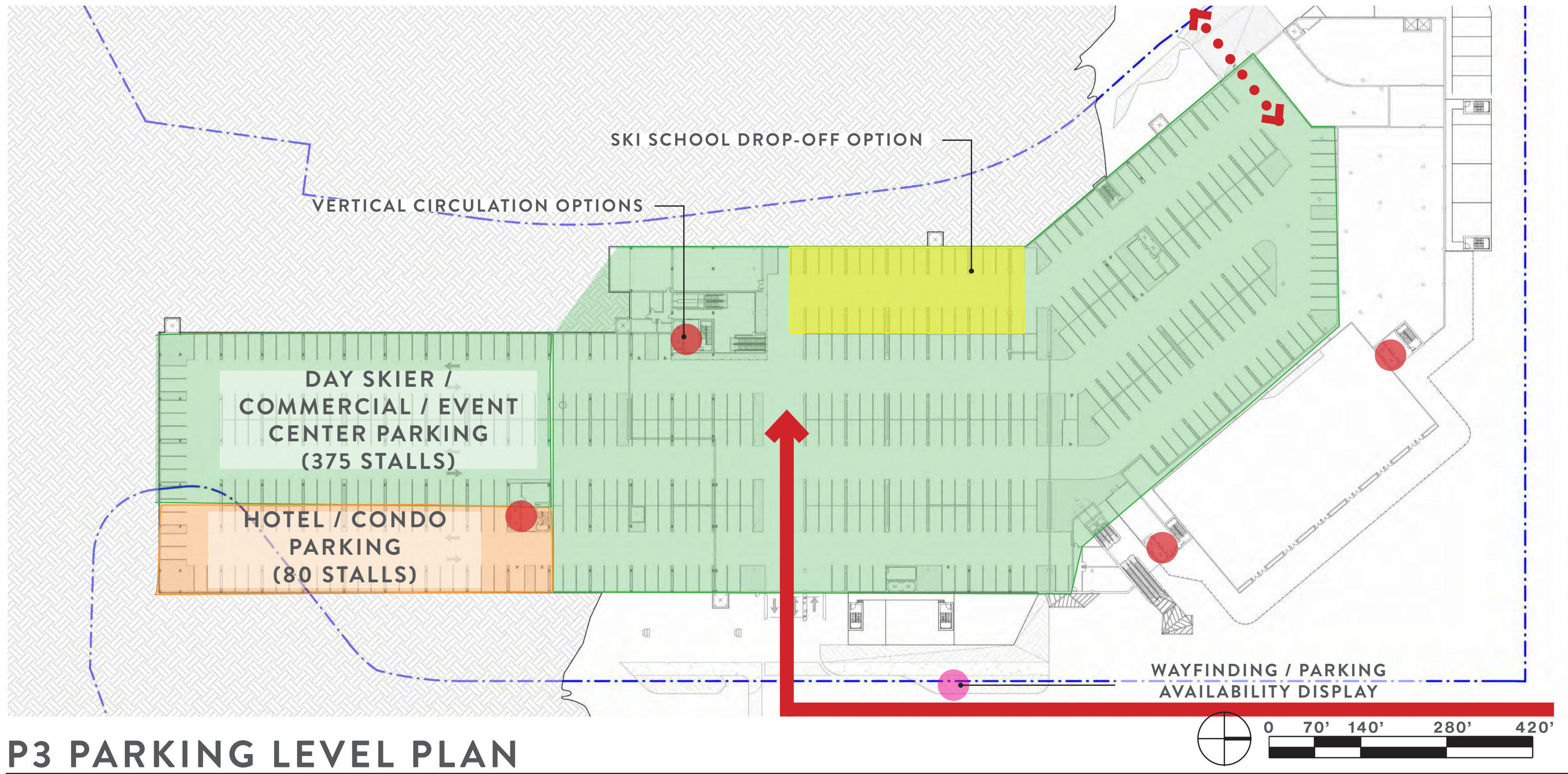
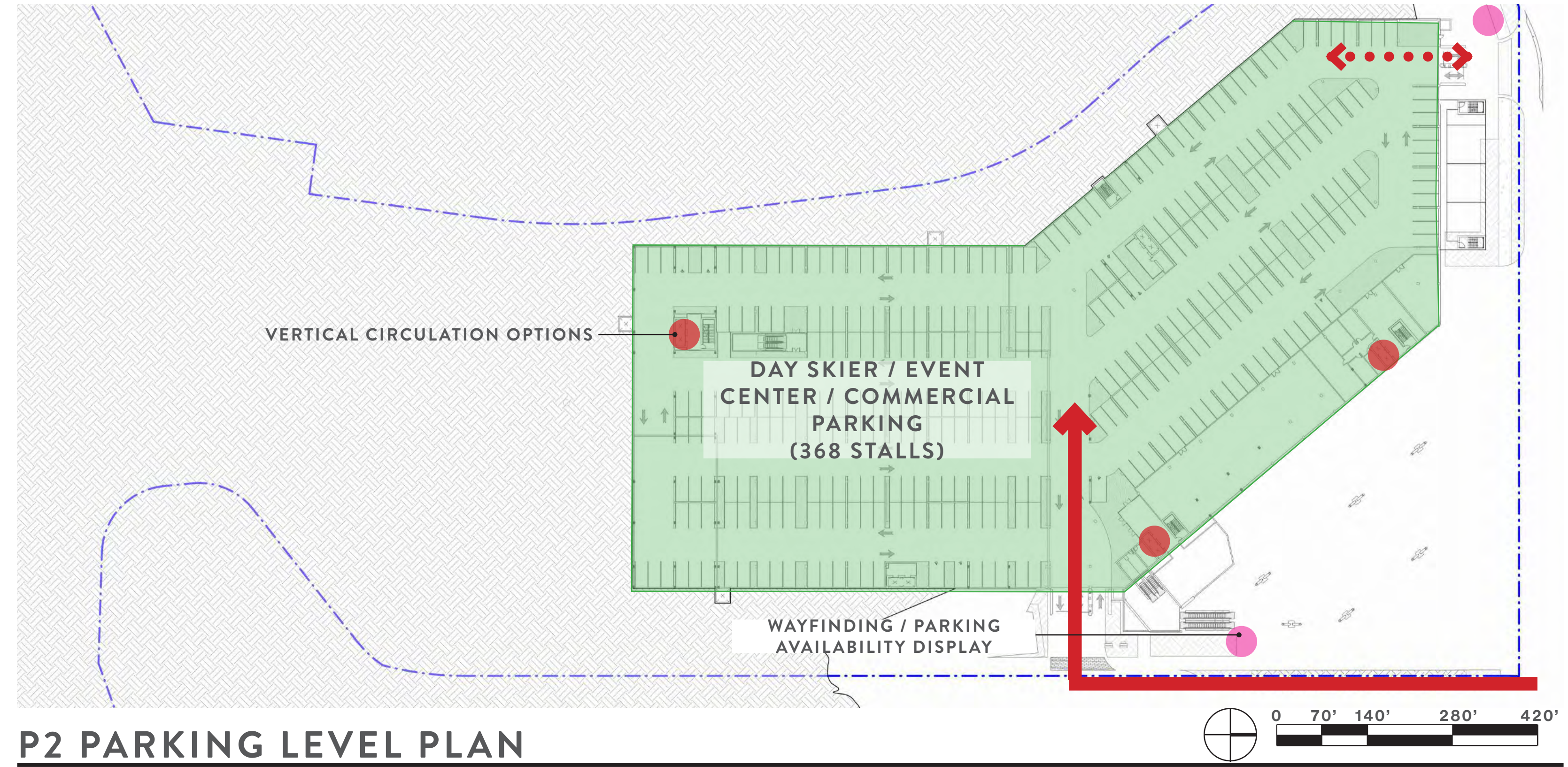
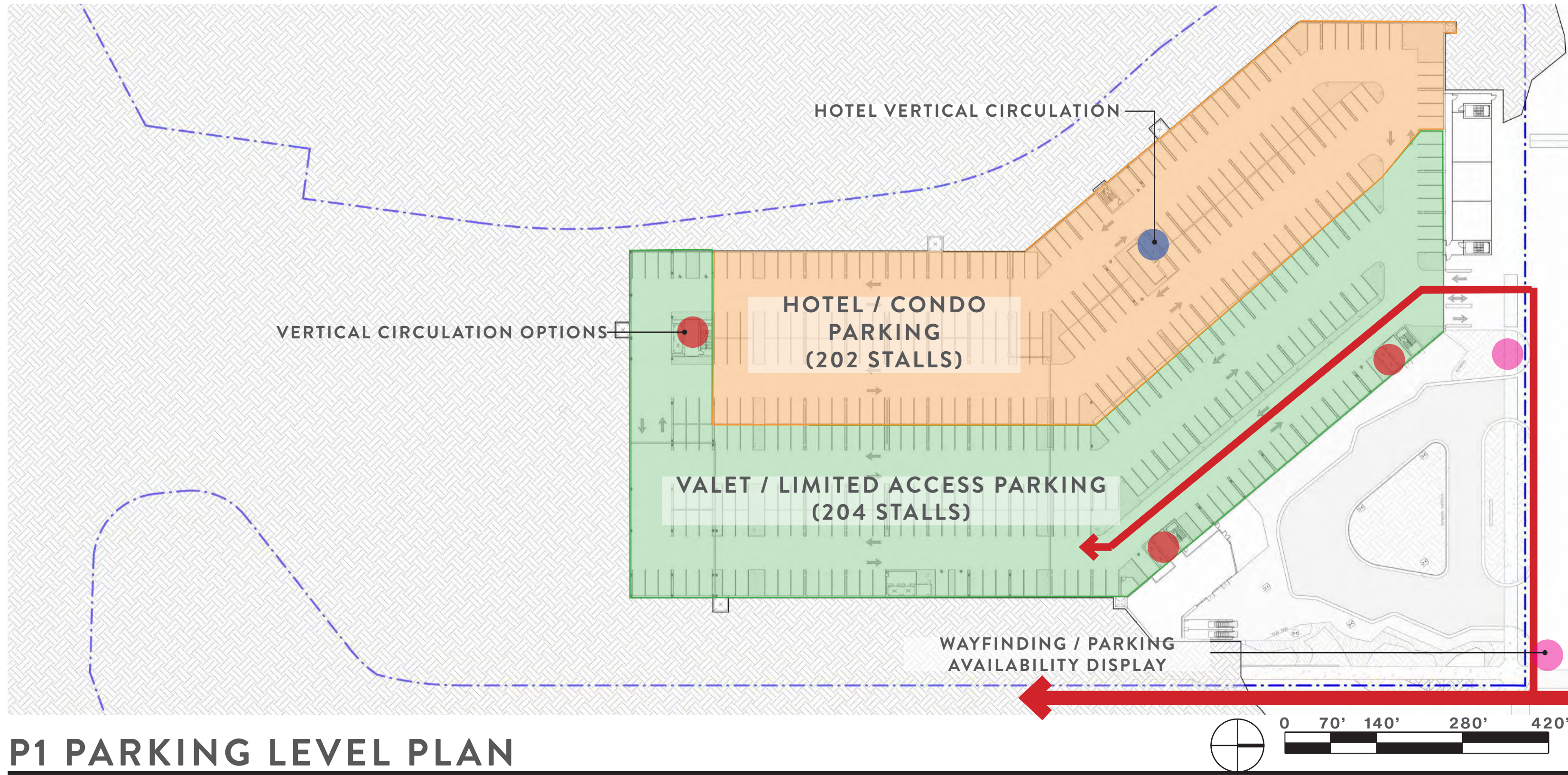




---

# PARKING ALLOCATION PLANS

# PARKING ALLOCATION

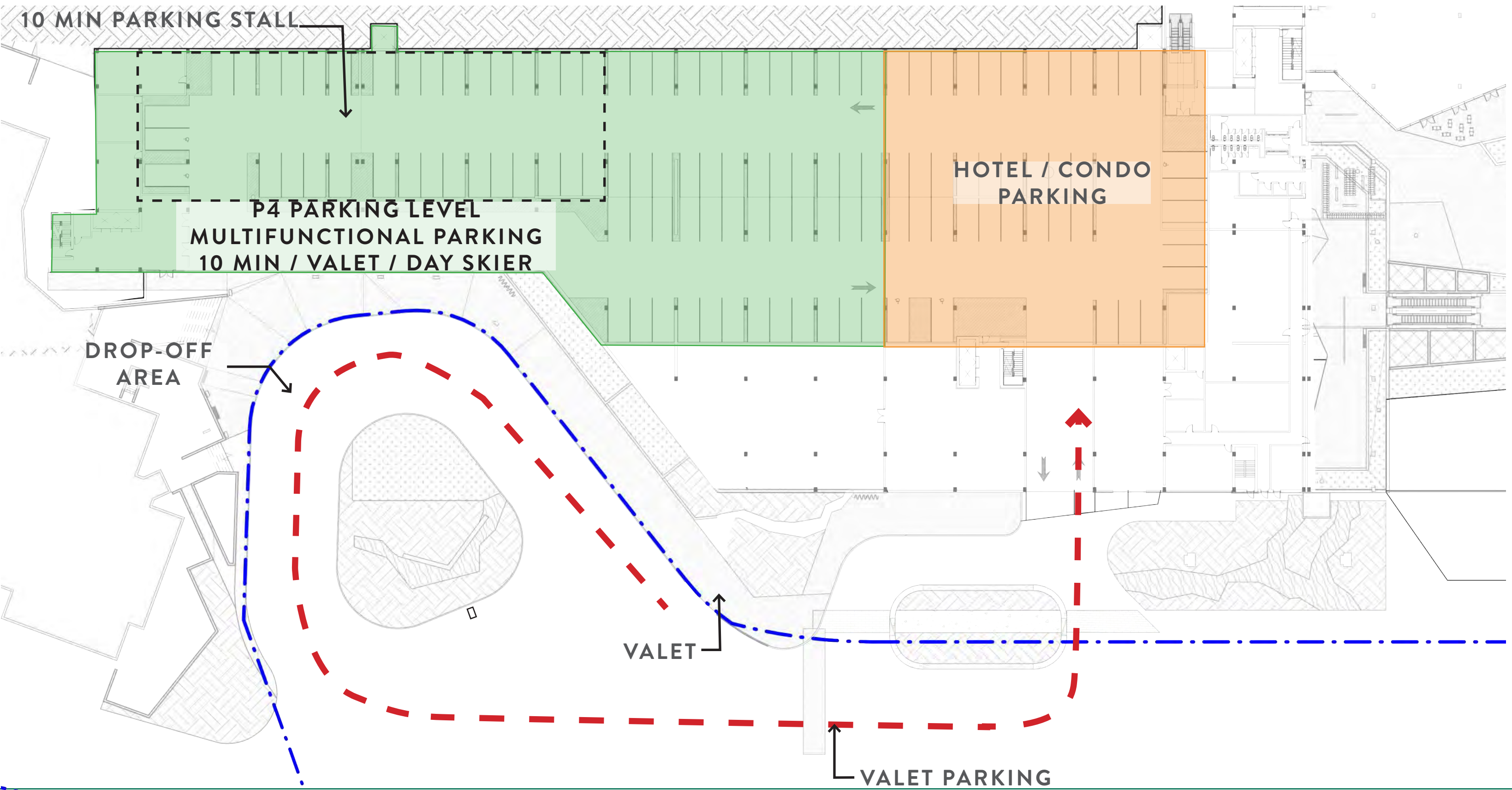
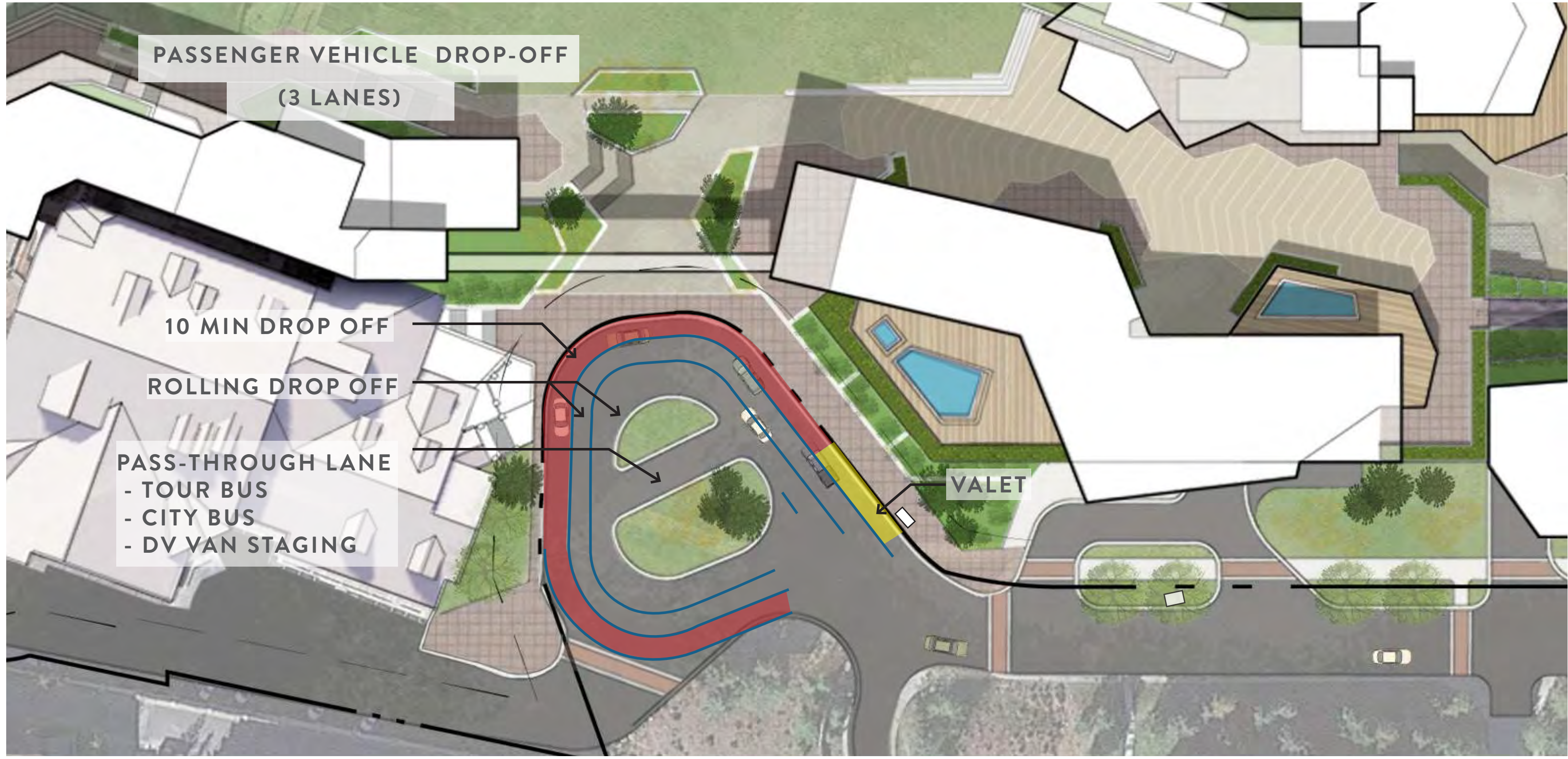


---

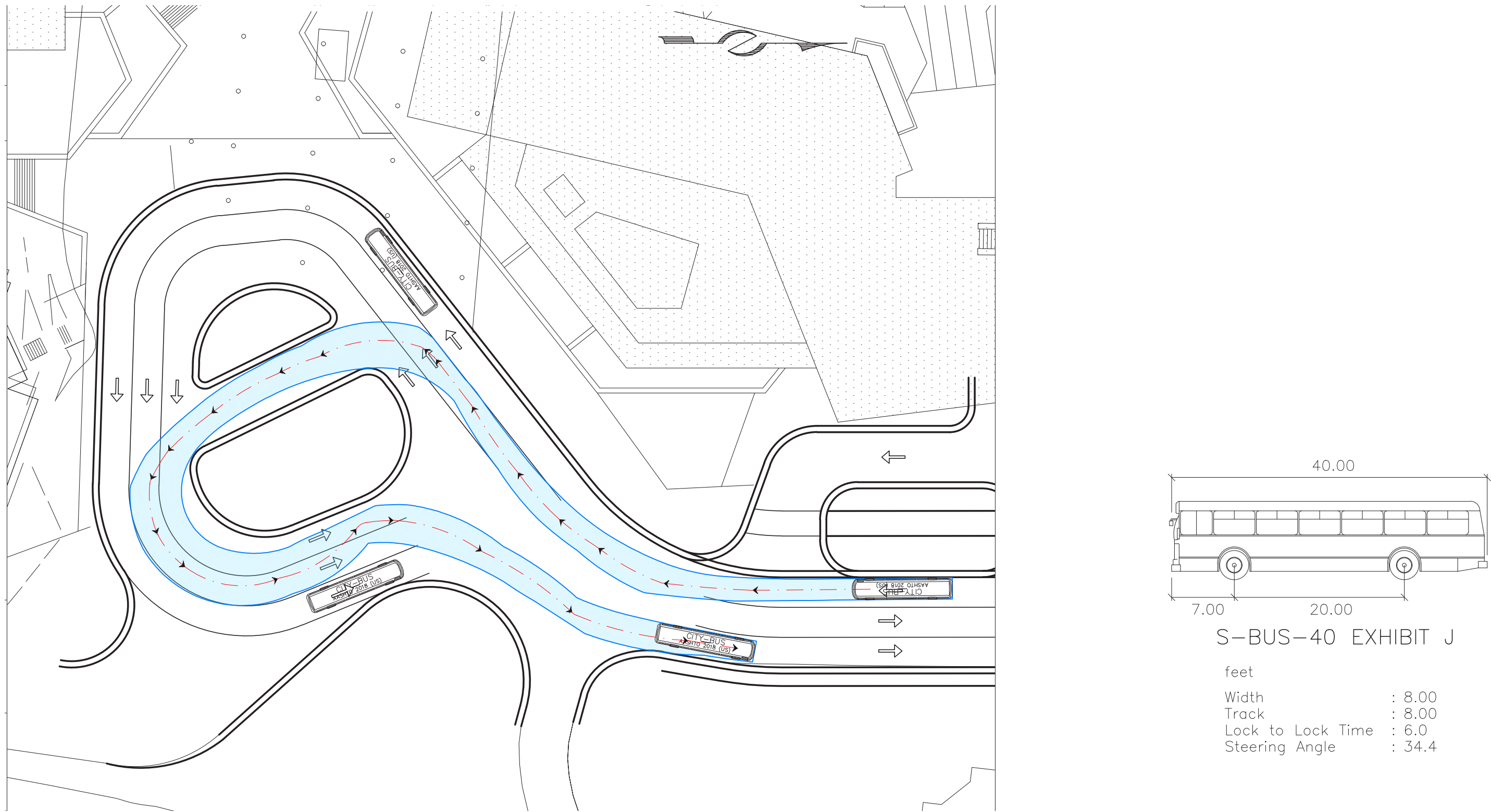
# SNOW PARK LODGE DROP-OFF

**SNOW PARK LODGE DROP-OFF**

**10 MIN PARKING: 312 LF**  
**ROLLING DROP OFF: 943 LF**  
**PASS-THROUGH LANE: 70 LF**



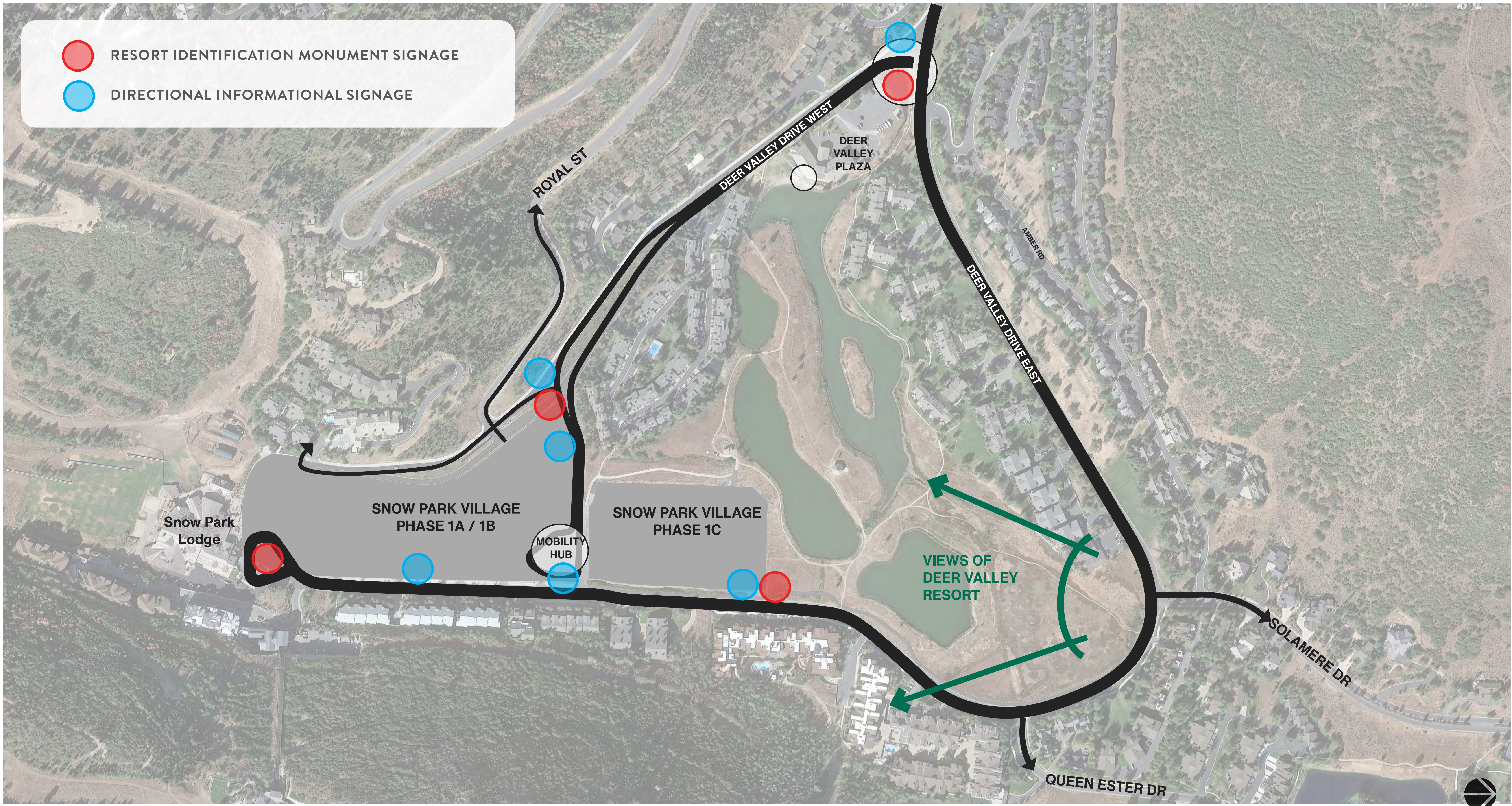
**BUS AUTO TURN**



---

# SIGNAGE & WAYFINDING EXHIBITS

SIGNAGE AND WAYFINDING



SIGNAGE AND WAYFINDING



MONUMENT SIGNS PRECEDENCE



WAYFINDING SIGNS PRECEDENCE



PARKING AVAILABILITY DISPLAY SIGNS PRECEDENCE

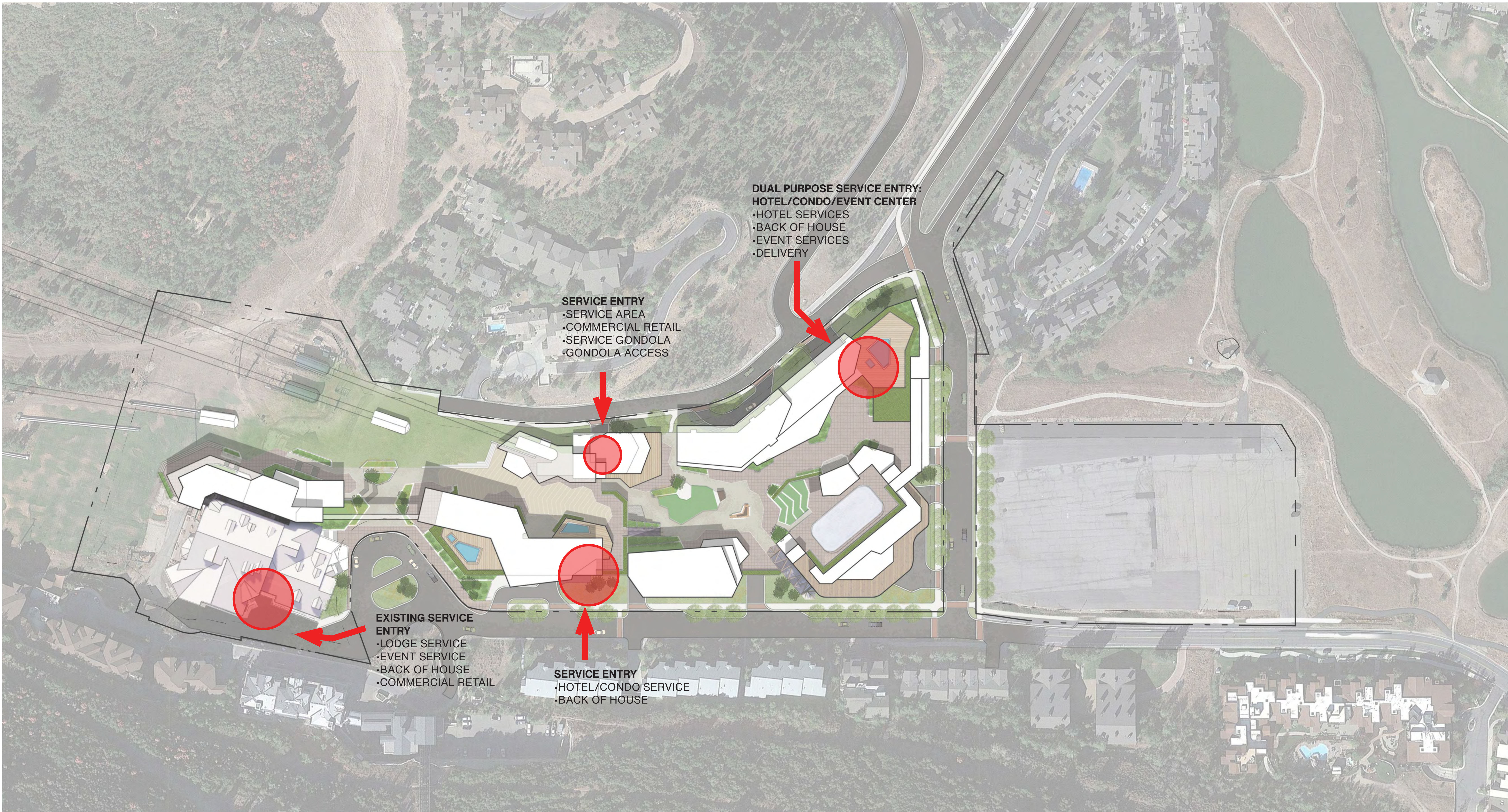


---

# SERVICE AREAS EXHIBIT



SERVICE AREAS



SEPTEMBER 22, 2021

SNOW PARK @ DEER VALLEY RESORT



# SNOW PARK VILLAGE @ DEER VALLEY RESORT

SEPTEMBER 22, 2021

