



DATE

03/2024

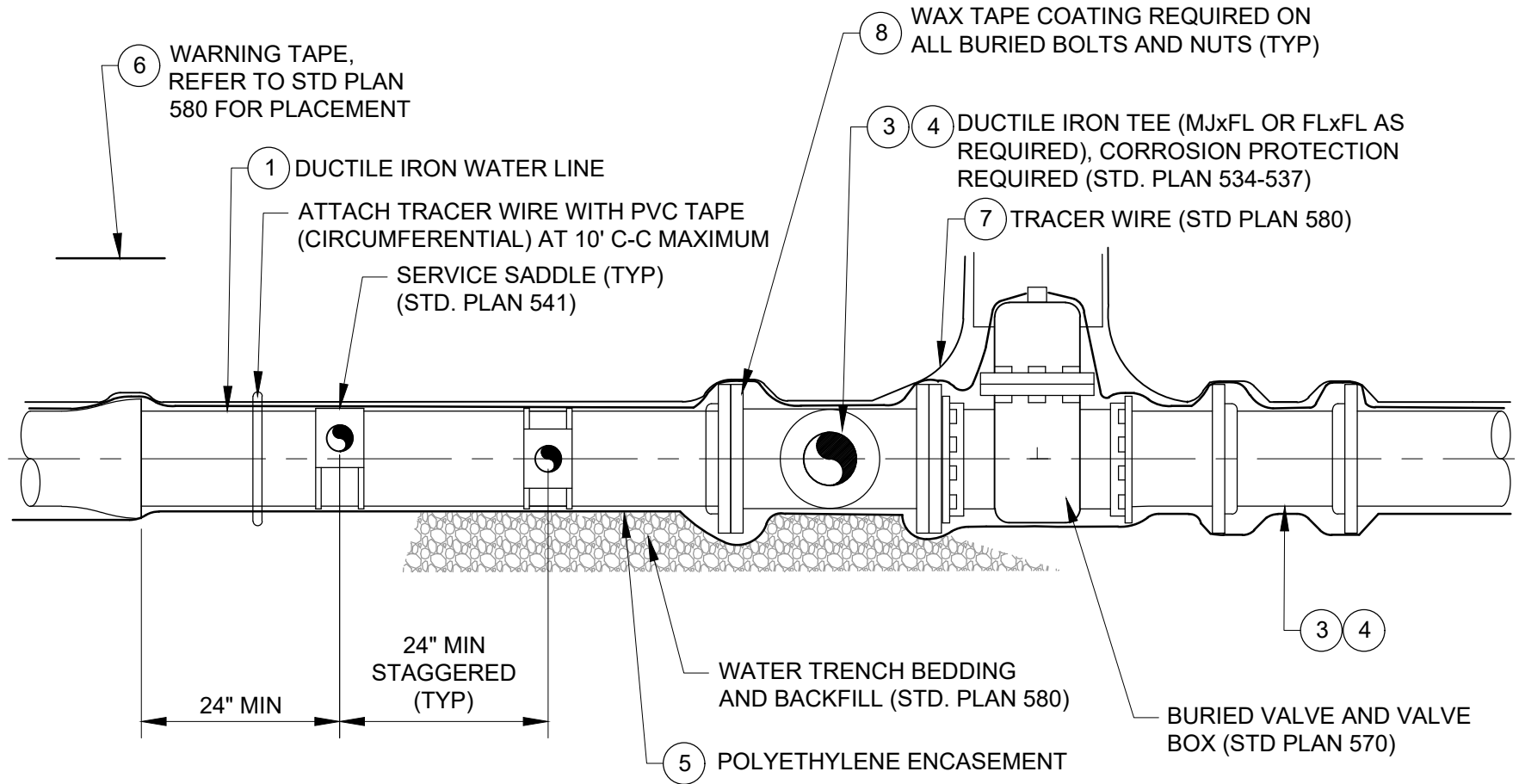
REV.

2

**WATER MAIN
DUCTILE IRON PIPE
4" TO 12" DIAMETER**

STD. PLAN

540-A



NOTES:

1. PROVIDE A 24" MINIMUM DUCTILE IRON PIPE SECTION LENGTH BETWEEN FITTINGS, VALVES, AND COUPLINGS
2. PROVIDE RETAINING GLANDS ON MECHANICAL JOINTS
3. STAGGER MULTIPLE TAPS 22-1/2 DEG. AND MAINTAIN 24" C-C MINIMUM SEPARATION
4. PROVIDE CORROSION PROTECTION AS REQUIRED. REFER TO STANDARD PLAN 534.
5. NO LOOPS TO BE CONSTRUCTED WITHOUT PRIOR APPROVAL FROM PARK CITY PUBLIC UTILITIES ENGINEER. ALL EFFORTS TO AVOID LOOPS SHOULD BE EXHAUSTED AND ONLY USED AS LAST ALTERNATIVE. LOOPS WILL NOT BE APPROVED ON NEW CONSTRUCTION.



DATE

03/2024

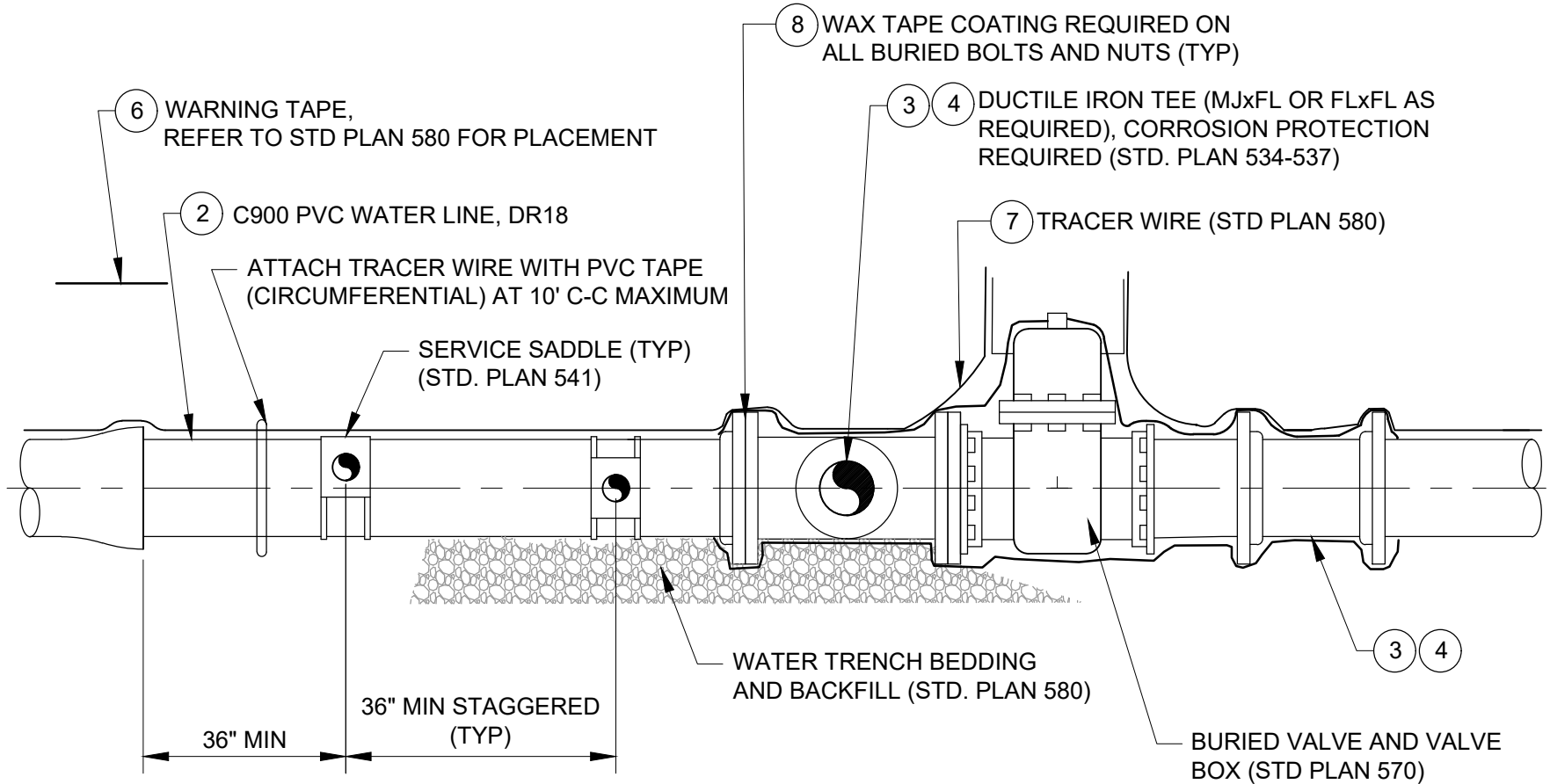
REV.

2

**WATER MAIN - PVC PIPE
4" TO 12" DIAMETER**

540-B

STD. PLAN



NOTES:

1. MINIMUM PVC PIPE SECTION LENGTH BETWEEN FITTINGS, VALVES, BELLS, AND COUPLINGS: NO DR-18 C-900 PVC SHORTER THAN 6' MAY BE USED. NO DR-14 C-900 PVC SHORTER THAN 3' MAY BE USED. DUCTILE IRON MUST BE USED FOR SHORTER LENGTHS.
2. PROVIDE RETAINING GLANDS ON MECHANICAL JOINTS
3. STAGGER MULTIPLE TAPS 22-1/2 DEG. AND MAINTAIN 36" C-C MINIMUM SEPARATION
4. PROVIDE CORROSION PROTECTION ON ALL METALLIC FITTINGS, VALVES, COUPLERS, ETC., AS REQUIRED. REFER TO STANDARD PLAN 534.
5. NO LOOPS TO BE CONSTRUCTED WITHOUT PRIOR APPROVAL FROM PARK CITY PUBLIC UTILITIES ENGINEER. ALL EFFORTS TO AVOID LOOPS SHOULD BE EXHAUSTED AND ONLY USED AS LAST ALTERNATIVE. LOOPS WILL NOT BE APPROVED ON NEW CONSTRUCTION.
6. PVC PIPE USED AS FIRE HYDRANT OR FIRE LINES LATERALS MUST BE DR-14 C-900 PVC



DATE

03/2024

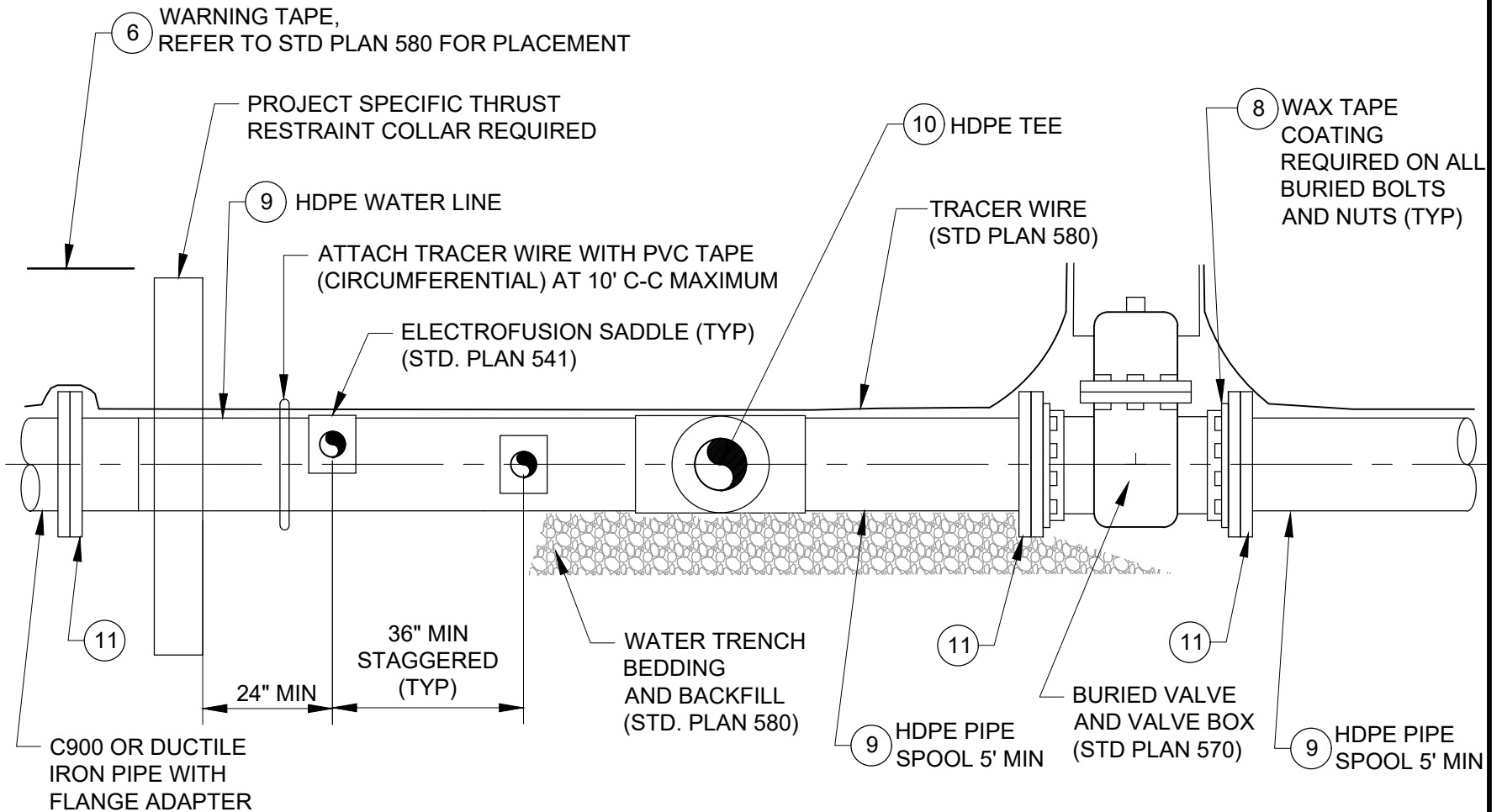
REV.

0

**WATER MAIN - HDPE PIPE
4" TO 16" DIAMETER**

540-C

STD. PLAN



NOTES:

1. PROVIDE RETAINING GLANDS ON MECHANICAL JOINTS
2. STAGGER MULTIPLE TAPS 22-1/2 DEG. AND MAINTAIN 36" C-C MINIMUM SEPARATION
3. PROVIDE CORROSION PROTECTION ON ALL METALLIC FITTINGS, VALVES, COUPLERS, ETC., AS REQUIRED. REFER TO STANDARD PLAN 534.
4. NO LOOPS TO BE CONSTRUCTED WITHOUT PRIOR APPROVAL FROM PARK CITY PUBLIC UTILITIES ENGINEER. ALL EFFORTS TO AVOID LOOPS SHOULD BE EXHAUSTED AND ONLY USED AS LAST ALTERNATIVE. LOOPS WILL NOT BE APPROVED ON NEW CONSTRUCTION
5. ALL PIPE WELDS TO BE PERFORMED BY CERTIFIED PERSONNEL
6. USE OF HDPE FLANGE GASKETS TO BE DETERMINED BY PARK CITY PUBLIC UTILITIES ENGINEER



DATE

03/2024

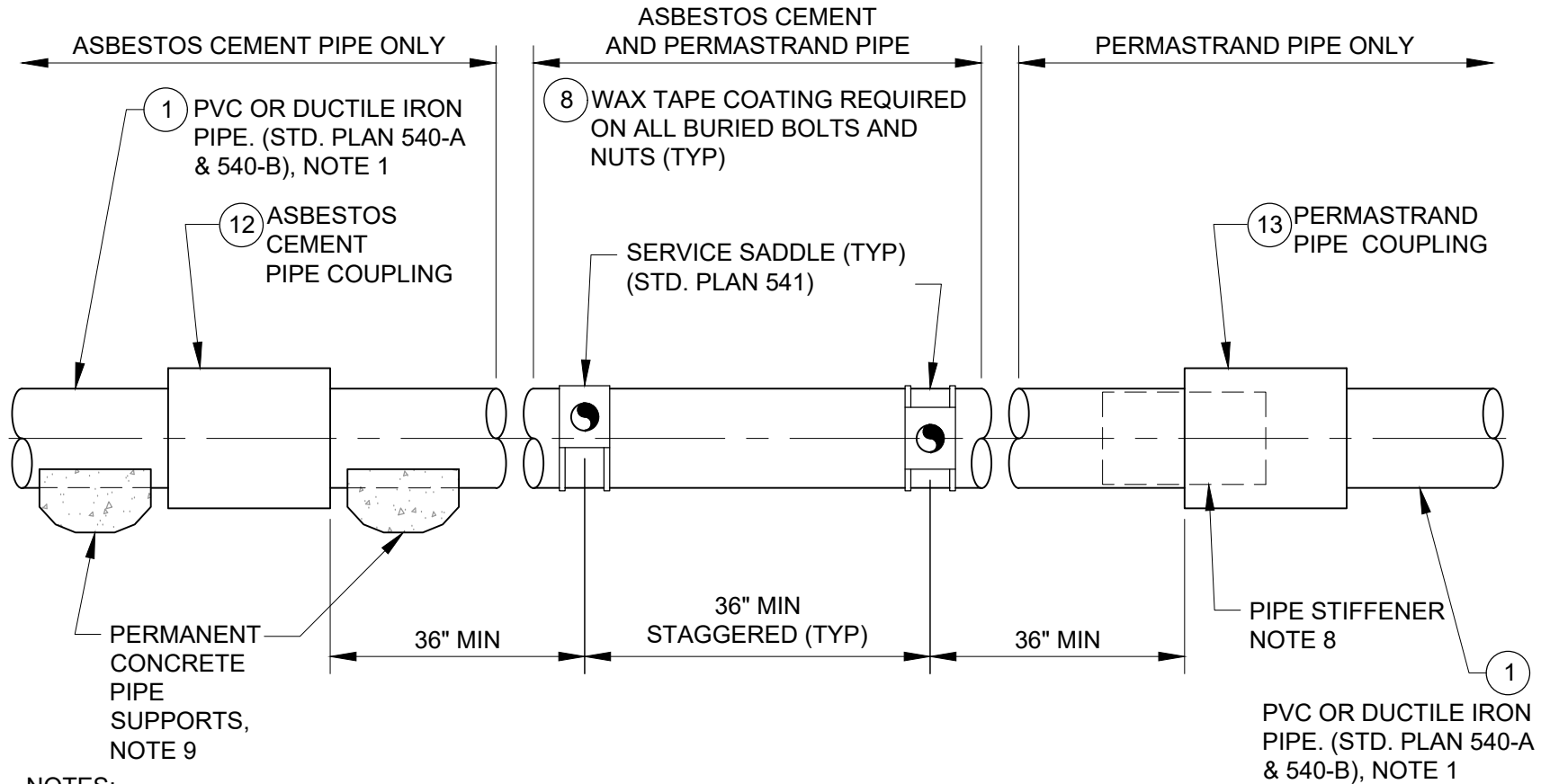
REV.

0

**CONNECTION TO EXISTING
WATER MAIN - ASBESTOS
CEMENT & PERMASTRAND
PIPE 4" TO 12" DIAMETER**

STD. PLAN

540-D



NOTES:

1. MINIMUM PVC PIPE SECTION LENGTH BETWEEN FITTINGS, VALVES, COUPLINGS, AND BELLS: NO DR-18 C-900 PVC SHORTER THAN 6' MAY BE USED. NO DR-14 C-900 PVC SHORTER THAN 3' MAY BE USED. DUCTILE IRON MUST BE USED FOR SHORTER LENGTHS.
2. PROVIDE RETAINING GLANDS ON MECHANICAL JOINTS
3. STAGGER MULTIPLE TAPS 22-1/2 DEG. AND MAINTAIN 36" C-C MINIMUM SEPARATION
4. PROVIDE CORROSION PROTECTION ON ALL METALLIC FITTINGS, VALVES, COUPLERS, ETC., AS REQUIRED. REFER TO STANDARD PLAN 534.
5. NO LOOPS TO BE CONSTRUCTED WITHOUT PRIOR APPROVAL FROM PARK CITY PUBLIC UTILITIES ENGINEER. ALL EFFORTS TO AVOID LOOPS SHOULD BE EXHAUSTED AND ONLY USED AS LAST ALTERNATIVE. LOOPS WILL NOT BE APPROVED ON NEW CONSTRUCTION
8. STIFFENERS FOR PERMASTRAND PIPE TO BE PROVIDED BY PARK CITY PUBLIC UTILITIES.
9. PERMANENT POURED CONCRETE PIPE SUPPORTS TO BE APPROVED AND INSPECTED BY PARK CITY PUBLIC UTILITIES ENGINEER.

LEGEND AND APPROVED PARTS LIST

ITEM	DESCRIPTION	ACCEPTABLE MANUFACTURER	MODELS
①	DUCTILE IRON PIPE, 4" TO 12" DIAMETER, PRESSURE CLASS 350, CEMENT-MORTAR LINING, ASPHALTIC INTERIOR/EXTERIOR COATING, AWWA C150 / C151 / C104	U.S. PIPE (1) PACIFIC STATES	<u>STANDARD JOINT PIPE:</u> PUSH ON TYTON JOINT
		U.S. PIPE (1) PACIFIC STATES	<u>RESTRAINED JOINT PIPE:</u> THRUST-LOCK TR FLEX
②	POLYVINYL CHLORIDE (PVC) PIPE, C.I.O.D., C900, DR 18, INTEGRAL BELL JOINT (ALLOWABLE SIZE 8" – 12")	JM EAGLE (1)	<u>STANDARD JOINT PIPE:</u> BLUE BRUTE
③	DUCTILE IRON FITTINGS, 4" TO 12" DIAMETER, FULL BODY, PRESSURE CLASS 350, CEMENT MORTAR LINED, ASPHALTIC EXTERIOR COATING, AWWA C153 / C104 FLANGES: AWWA C110 / C115, CLASS 125 FLANGE WITH FULL FACE OR RING FLANGE-TYPE GASKETS	U.S. PIPE (1) PACIFIC STATES	<u>PUSH ON STYLE FITTING:</u> TYTON JOINT <u>FLANGED FITTING:</u>
		U.S. PIPE (1) PACIFIC STATES	<u>RESTRAINED JOINT PIPE:</u> THRUST-LOCK TR FLEX
④	FITTINGS – DUCTILE IRON MECHANICAL JOINT PIPE WITH RETAINER GLANDS OR SST TIE ROD / NUT RESTRAINTS, AWWA C110 / C111 / C104	EBBA IRON (1)	<u>FITTINGS:</u> MECHANICAL JOINT <u>RETAINER GLANDS:</u> MEGALUG SERIES 1100, STD T-BOLTS AND NUTS
⑤	V-BIO ENHANCED POLYETHYLENE ENCASEMENT, AWWA C105 & AWWA C703E METHODS A & C	MCWANE (1)	AWWA C703E METHOD A (4 MIL) AT PIPE AND AWWA C703E METHOD C (10 MIL) AT BOLT-TYPE JOINTS, FITTINGS, AND VALVES
⑥	DETECTABLE UNDERGROUND WARNING TAPE, 5-MIL MINIMUM, ALUMINUM BACKING, BLUE BACKGROUND, 6" WIDE	SETON (1)	85525
⑦	TRACER WIRE: 12 GA. SOLID, BLUE PVC INSULATION; WIRE-WIRE CONNECTORS SILICONE-FILLED WIRE NUTS	CONNECTORS: IDEAL INDUSTRIES (1)	TWISTER DB PLUS OR APP'D EQUAL
⑧	WAX TAPE COATING SYSTEM, APPLY TO <u>ALL</u> BURIED BOLTS AND NUTS INCLUDING MECHANICAL JOINT RESTRAINT SYSTEMS, AWWA C 217. REFER TO STD. PLAN 534.		
⑨	HDPE 4710 PIPE, 150 PSI MIN WORKING PRESSURE	JM EAGLE (1)	INTEGRAL DOUBLE STRIPE CULINARY: BLUE IRRIGATION: PURPLE
⑩	HDPE 4710 PIPE FITTINGS, 150 PSI MIN WORKING PRESSURE	JM EAGLE (1)	
⑪	HDPE WELD ON FLANGE ADAPTER WITH 316 SST BACKER RING	JM EAGLE (1)	
⑫	AC PIPE COUPLING	HYMAX	2 WIDE-RANGE COUPLING
⑬	PERMASTRAND PIPE COUPLING	ROMAC	MACRO HP COUPLING



PARK CITY MUNICIPAL CORPORATION
WATER

DATE

03/2024

REV.

1

WATER MAIN AND FIRE LINES

STD. PLAN

540 S.1

DETAIL NOTES

1. COORDINATE PIPE SIZE WITH APPROVED PLANS PRIOR TO ORDERING MATERIALS
2. LOCATE MAIN, FITTINGS, VALVES, AND FIRE LINES PER APPROVED PLANS
3. DUCTILE IRON PIPE IS REQUIRED WHEN WATER SYSTEM DESIGN PRESSURE EXCEEDS 200 PRESSURE RATING
4. PROVIDE "DOMESTIC" DUCTILE IRON FITTINGS
5. PROVIDE 316 STAINLESS STEEL BOLTS AND NUTS WITH ANTI-SEIZE LUBRICATION ON ALL FLANGED CONNECTIONS
6. REFER TO STANDARD PLAN 534 FOR SUPPLEMENTAL EXTERNAL CORROSION PROTECTION REQUIREMENTS. WHEN CATHODIC PROTECTION IS REQUIRED REFER TO STD. PLANS 534-538.
7. REFER TO SPECIFICATIONS FOR FLUSHING, HYDROSTATIC TESTING, AND DISINFECTING REQUIREMENTS
8. (1) DENOTES "OR APPROVED EQUAL" MANUFACTURER AND MODEL. SUBMIT IN ACCORDANCE WITH CITY STANDARDS



PARK CITY MUNICIPAL CORPORATION
WATER

DATE

03/2024

REV.

1

WATER MAIN AND FIRE LINES

STD. PLAN

540 S.2



DATE

03/2024

REV.

2

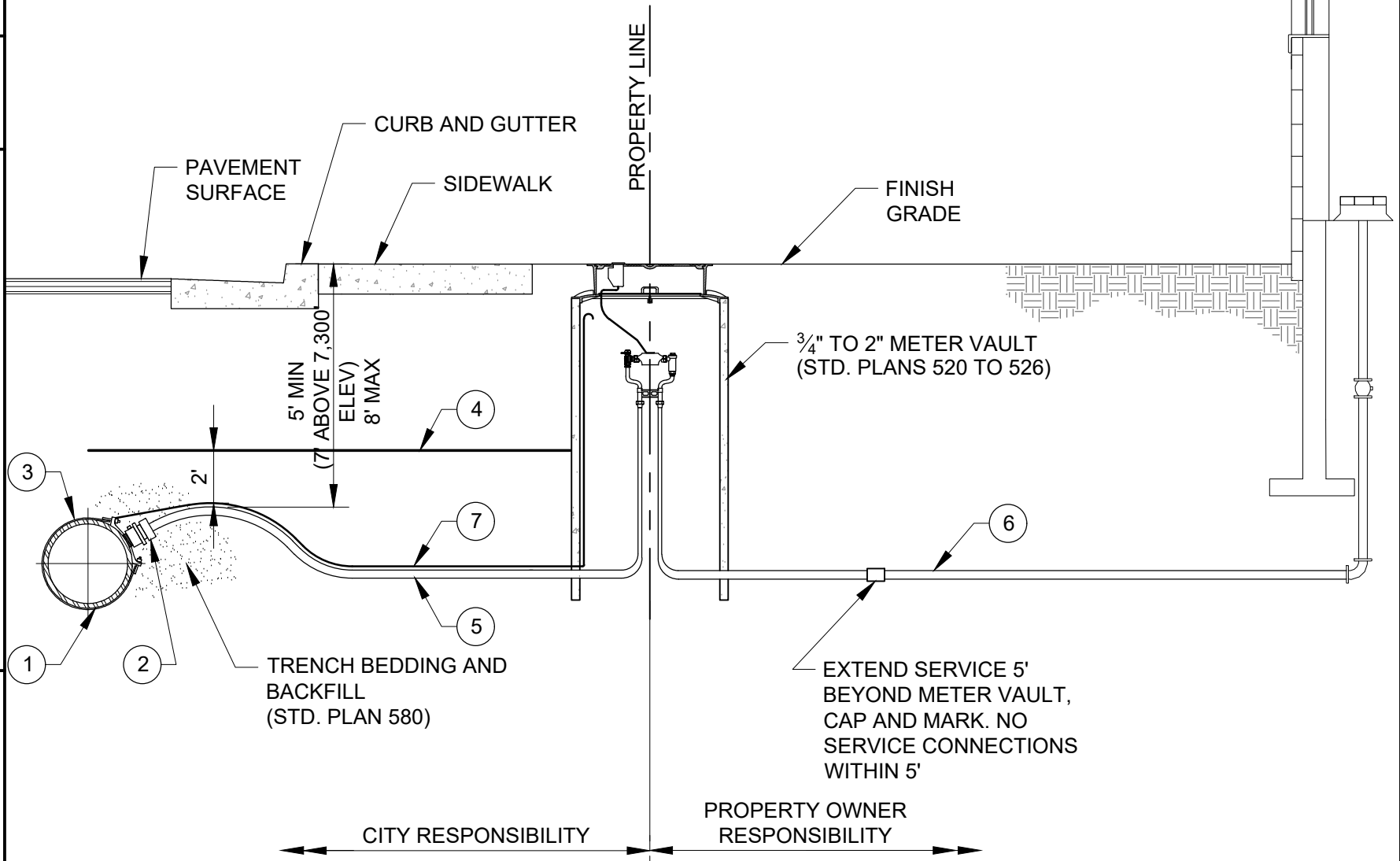
WATER SERVICE LINE
3/4" TO 2" METERS

STD. PLAN

541

NOTES:

1. REFERENCE STD. PLAN 520 FOR GENERAL REQUIREMENTS - METER, METER VAULT, AND SERVICE LINE.




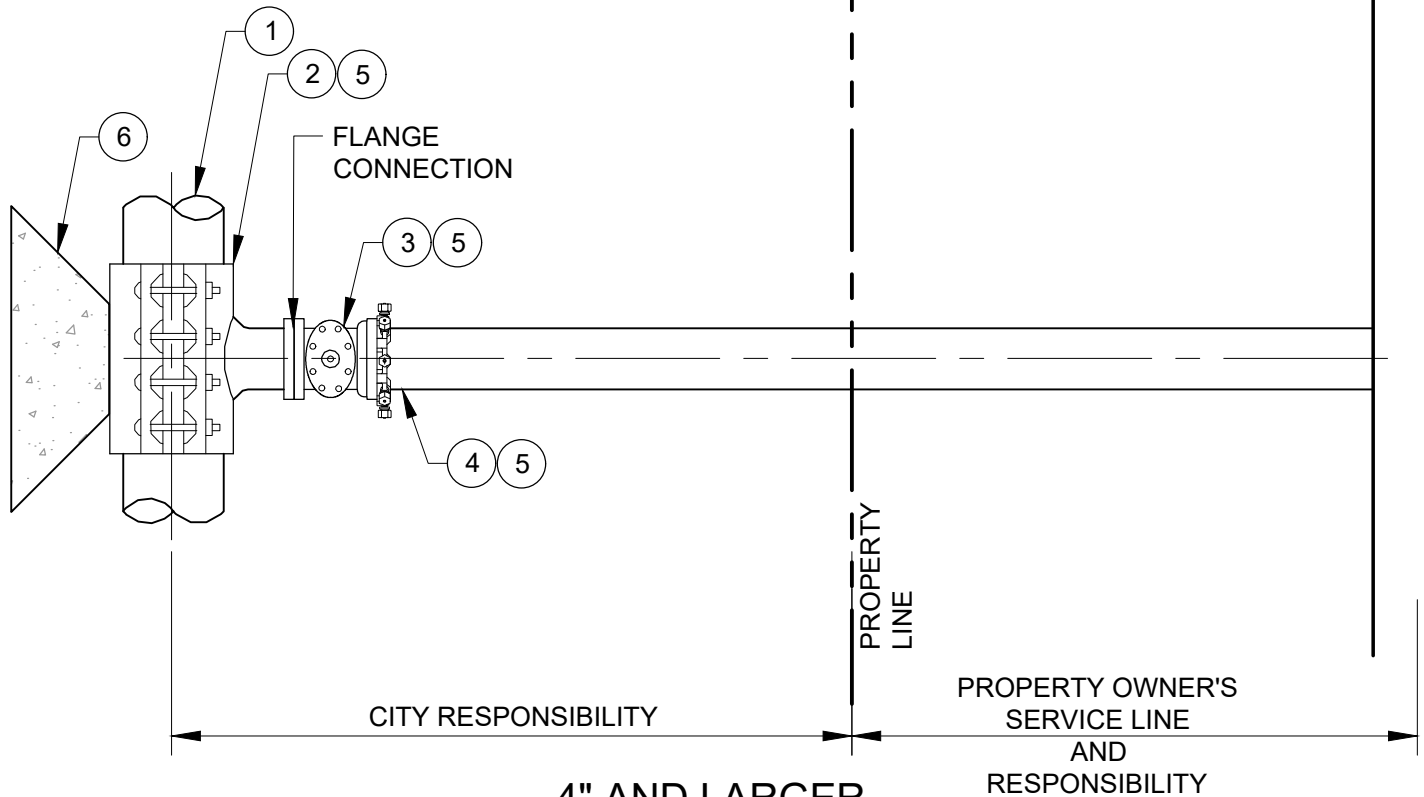
LEGEND AND APPROVED PARTS LIST

ITEM	DESCRIPTION	ACCEPTABLE MANUFACTURER	MODELS
①	SERVICE SADDLE: <ul style="list-style-type: none"> DUCTILE IRON (DI) PIPE; DUAL STRAP PVC PIPE; DUAL STRAP ASBESTOS CEMENT (AC) PIPE; DUAL STRAP PERMASTRAND PIPE; DUAL STRAP HDPE PIPE; ELECTROFUSION 	POWERSEAL	DI, PVC, AC & PERMASTRAND PIPE: STAINLESS STEEL SADDLECORP, 3450AS-POWERJOINT, 2" SERVICE
		ROMAC	PVC, AC & PERMASTRAND PIPE: STYLE 202NS DUAL STAINLESS STEEL STRAPS, 2" SERVICE, FIP THDS
		FORD	DI PIPE: BRONZE, STYLE 202B, 2" SERVICE, FIP THDS
		ISCO OR APPV'D EQUAL	HDPE PIPE: 2" SERVICE, BY APPROVAL
②	BRASS CORPORATION STOP, INLET IP THREAD, OUTLET CTS COMPRESSION	MUELLER	B-25008N
		FORD	FB1100-2-Q-NL
③	V-BIO ENHANCED POLYETHYLENE ENCASEMENT, AWWA C105 & AWWA C703E METHOD C	MCWANE OR APPV'D EQUAL	AWWA C703E METHOD C (4 MIL)
④	DETECTABLE UNDERGROUND WARNING TAPE, 5-MIL MINIMUM, ALUMINUM BACKING BLUE BACKGROUND, 6" WIDE	SETON OR APPV'D EQUAL	85525
⑤	2" WATER SERVICE LINE: HIGH-DENSITY POLYETHYLENE TUBING (CTS), BLUE, SDR 9, AWWA C901	ADS OR APPV'D EQUAL	
⑥	WATER SERVICE LINE: HIGH-DENSITY POLYETHYLENE TUBING (CTS), BLUE, SDR 9, AWWA C901	ADS OR APPV'D EQUAL	
⑦	TRACER WIRE: 12 GA. SOLID, BLUE PVC INSULATION; WIRE-WIRE CONNECTORS SILICONE-FILLED WIRE NUTS	IDEAL INDUSTRIES	TWISTER DB PLUS OR APP'D EQUAL

DETAIL NOTES

- COORDINATE SERVICE SIZE WITH CITY PRIOR TO ORDERING MATERIALS
- LOCATE SERVICE PER APPROVED PLANS
- NO SERVICE LINE FITTINGS ALLOWED BETWEEN CORPORATION STOP AND METER VAULT CURB STOP VALVE
- APPLY WAX TAPE COATING SYSTEM TO SERVICE SADDLE BOLTS AND NUTS, AWWA C217. SYSTEM TO INCLUDE FILLER MATERIAL, TAPE COATING, AND PROTECTIVE OUTERWRAP. DENSO NORTH AMERICA, TRENTON, OR APPROVED EQUAL (STD. PLAN 534)

 PARK CITY MUNICIPAL CORPORATION WATER	DATE	WATER SERVICE LINE 3/4" TO 2" METERS	STD. PLAN
	03/2024		
	REV.		
	2		541 S



LEGEND

ITEM	DESCRIPTION
①	EXISTING MAIN
②	STAINLESS STEEL TAPPING SLEEVE (NOT ALLOWED IN NEW CONSTRUCTION)
③	TAPPING VALVE OR FLG X MJ GATE VALVE (STD PLAN 570 AND 572)
④	POLYVINYL CHLORIDE (PVC) PIPE, C.I.O.D., C900, DR 14, INTEGRAL BELL JOINT
⑤	POLYETHYLENE WRAPPED (STD. PLAN 540-A)
⑥	THRUST BLOCK (STD. PLAN 561)

NOTES:

1. FOR FIRE SERVICE LINES A DOUBLE CHECK VALVE OR REDUCED PRESSURE PRINCIPLE BACKFLOW ASSEMBLY TO BE DETERMINED BY BUILDING AND WATER DEPARTMENTS BASED ON DEGREE OF HAZARD POSED BY FIRE SPRINKLER PROTECTION SYSTEM USE.
2. ENTIRE STAINLESS STEEL TAPPING TEE IS TO BE WAX TAPED AS WELL AS THE FLANGE, BOLTS, AND THE VALVE BONET BOLTS (STD. PLAN 534.2)
3. NO TAPPING OF SIMILAR SIZED PIPE, TAP MUST BE AT LEAST ONE STANDARD SIZE SMALLER THAN THE WATER MAIN BEING TAPPED
4. HOT TAPS MAY BE DENIED FOR ANY REASON SEEN FIT BY PARK CITY WHICH INCLUDE BUT ARE NOT LIMITED TO: PIPE MATERIAL, PIPE CONDITION, AND LOCATION OF PROPOSED HOT TAP
5. A HOT TAP REQUEST FORM MUST BE SUBMITTED FOUR BUSINESS DAYS BEFORE THE APPROVED TAP IS TO BE PERFORMED



PARK CITY MUNICIPAL CORPORATION
WATER

DATE

03/2024

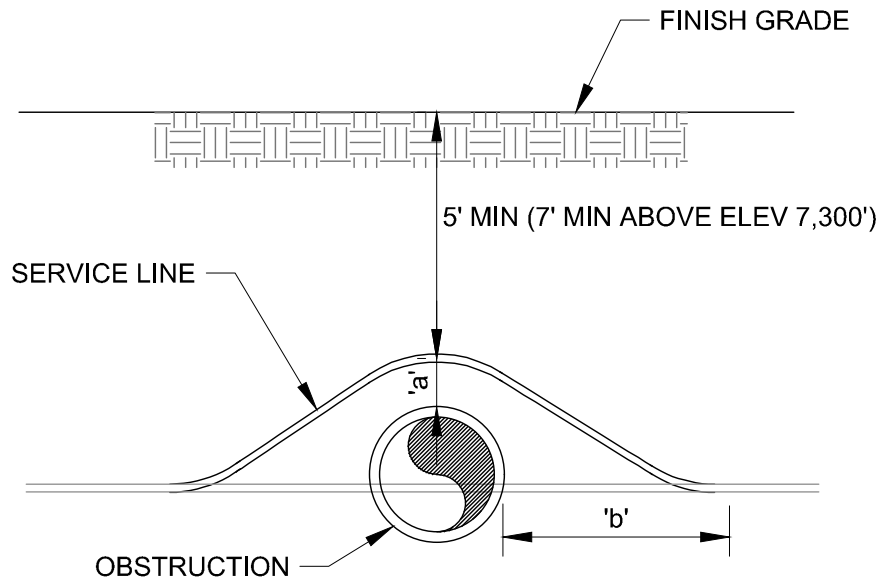
REV.

2

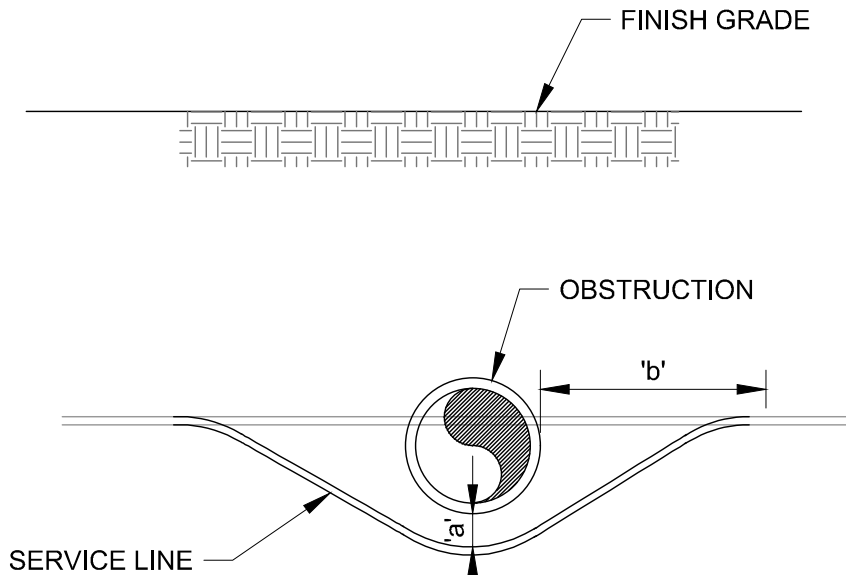
HOT TAPS 4" AND LARGER

STD. PLAN

542



METHOD A



METHOD B

TABLE OF DIMENSIONS

	OBSTRUCTION		
	SEWER MAIN	STORM DRAIN OR CULVERT	OTHER
'a'	18"	SEE STD. PLAN 546	12" MIN
'b'	5'-0"		3'-0" MIN

NOTES:

1. ALL CULINARY WATER MAINS AND LATERALS SHALL BE INSTALLED ABOVE SEWER LINES UNLESS APPROVED BY PARK CITY AND UTAH DIVISION OF DRINKING WATER.



PARK CITY MUNICIPAL CORPORATION
WATER

DATE

6/2019

REV.

1

WATER SERVICE LINE LOOP

STD. PLAN

543

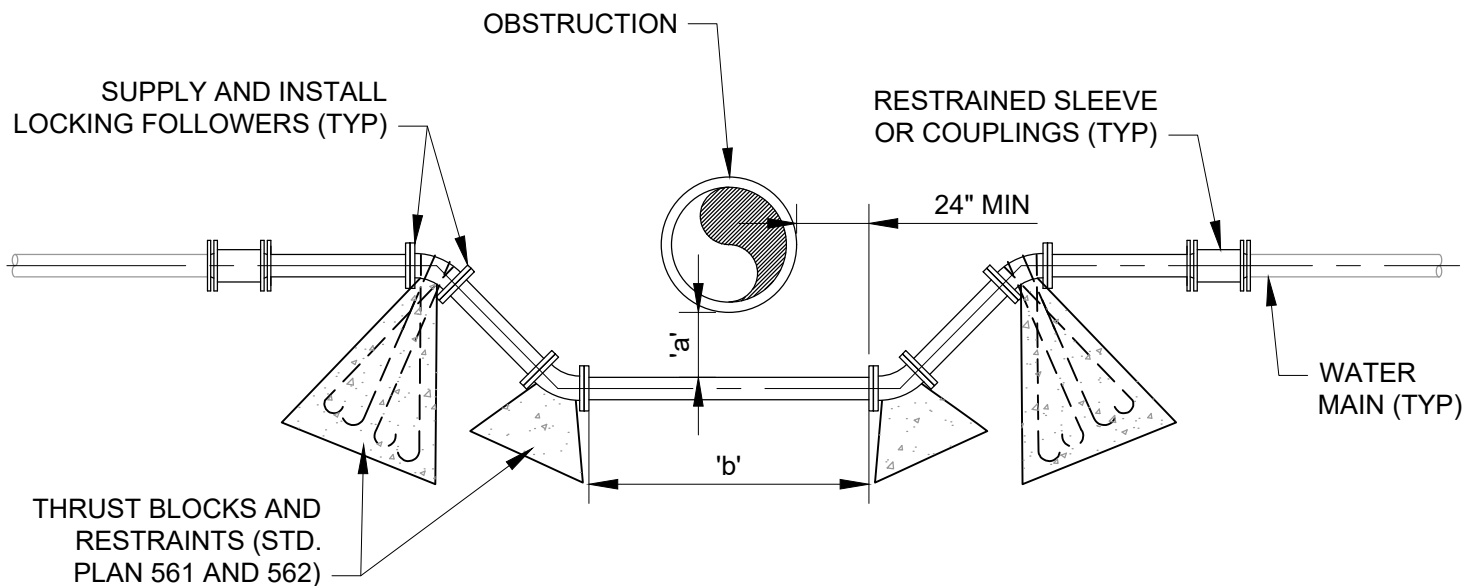


TABLE OF DIMENSIONS		
OBSTRUCTION	'a'	'b'
SEWER	18" MIN	20' MIN
STORM DRAIN OR CULVERT	SEE STD. PLAN 546	O.D. + 6'
OTHER	12" MIN	O.D. + 4'

METHOD A

NOTES:

1. NO LOOPS TO BE CONSTRUCTED WITHOUT PRIOR APPROVAL FROM PARK CITY PUBLIC UTILITIES ENGINEER. ALL EFFORTS TO AVOID LOOPS SHOULD BE EXHAUSTED AND ONLY USED AS LAST ALTERNATIVE. LOOPS WILL NOT BE APPROVED ON NEW CONSTRUCTION.
2. RESTRAINED JOINT PIPE REQUIRED
3. ALL CULINARY WATER MAINS AND LATERALS SHALL BE INSTALLED ABOVE SEWER LINES UNLESS APPROVED BY PARK CITY AND UTAH DIVISION OF DRINKING WATER.



PARK CITY MUNICIPAL CORPORATION
WATER

DATE

03/2024

REV.

2

WATER MAIN LOOP

STD. PLAN

544-A

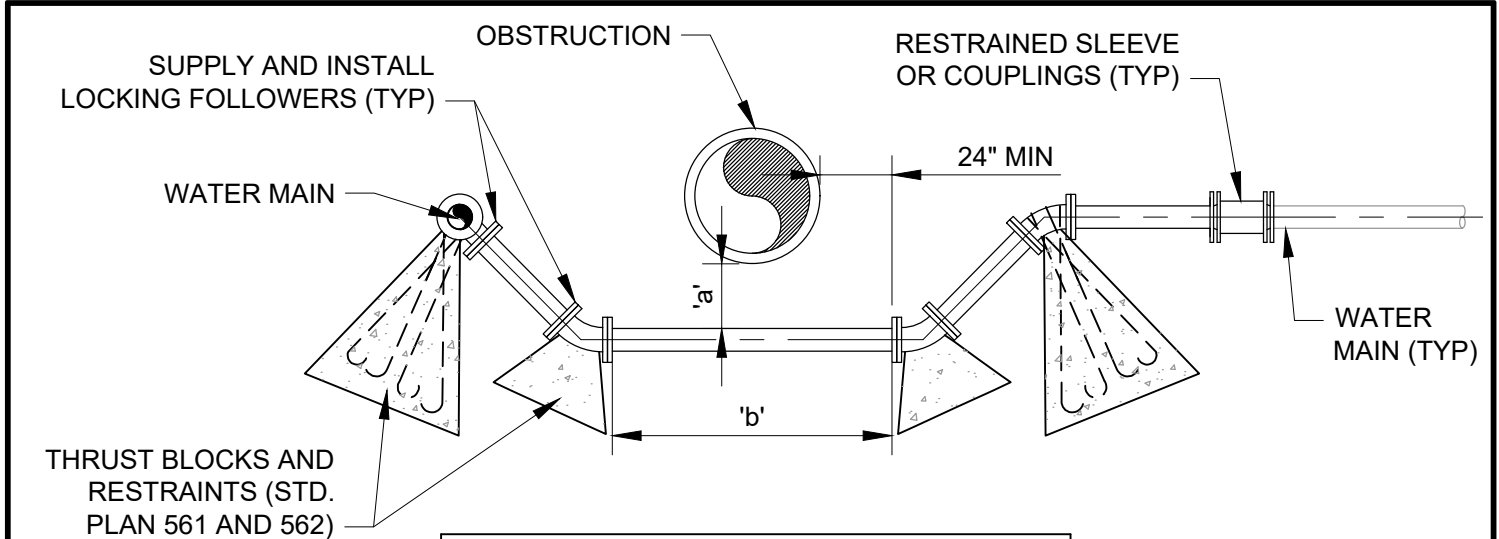
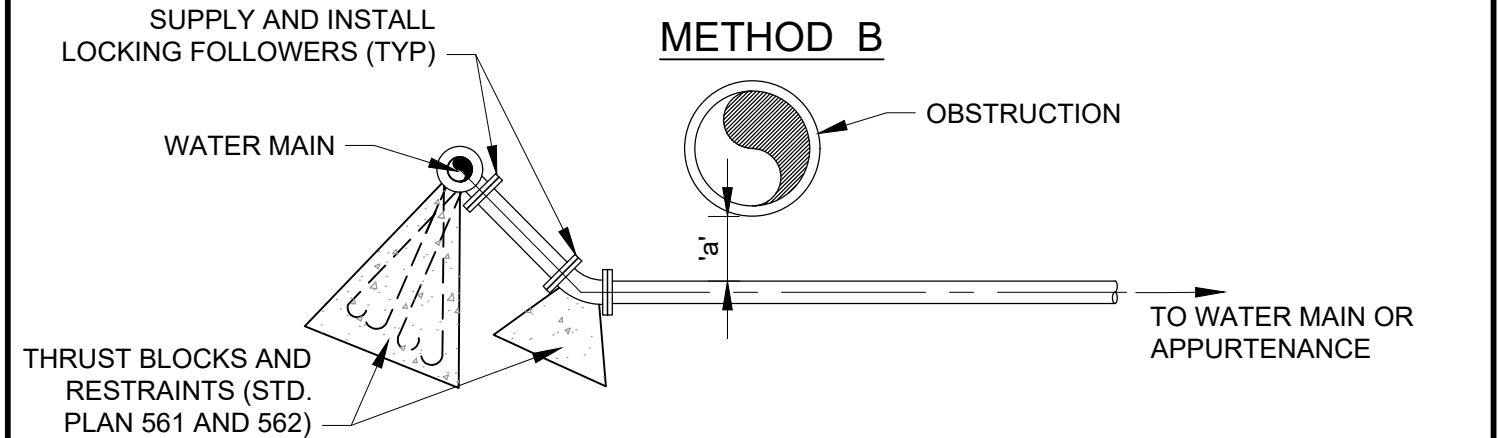


TABLE OF DIMENSIONS		
OBSTRUCTION	'a'	'b'
SEWER	18" MIN	20' MIN
STORM DRAIN OR CULVERT	SEE STD. PLAN 546	O.D. + 6'
OTHER	12" MIN	O.D. + 4'



NOTES:

1. NO LOOPS TO BE CONSTRUCTED WITHOUT PRIOR APPROVAL FROM PARK CITY PUBLIC UTILITIES ENGINEER. ALL EFFORTS TO AVOID LOOPS SHOULD BE EXHAUSTED AND ONLY USED AS LAST ALTERNATIVE. LOOPS WILL NOT BE APPROVED ON NEW CONSTRUCTION.
2. RESTRAINED JOINT PIPE REQUIRED
3. ALL CULINARY WATER MAINS AND LATERALS SHALL BE INSTALLED ABOVE SEWER LINES UNLESS APPROVED BY PARK CITY AND UTAH DIVISION OF DRINKING WATER.

TABLE OF DIMENSIONS	
OBSTRUCTION	'a'
SEWER	18" MIN
STORM DRAIN OR CULVERT	SEE STD. PLAN 546
OTHER	12" MIN

METHOD C

 PARK CITY MUNICIPAL CORPORATION WATER	DATE	WATER MAIN LOOP	STD. PLAN
	03/2024		
	REV.		
	2		544-B

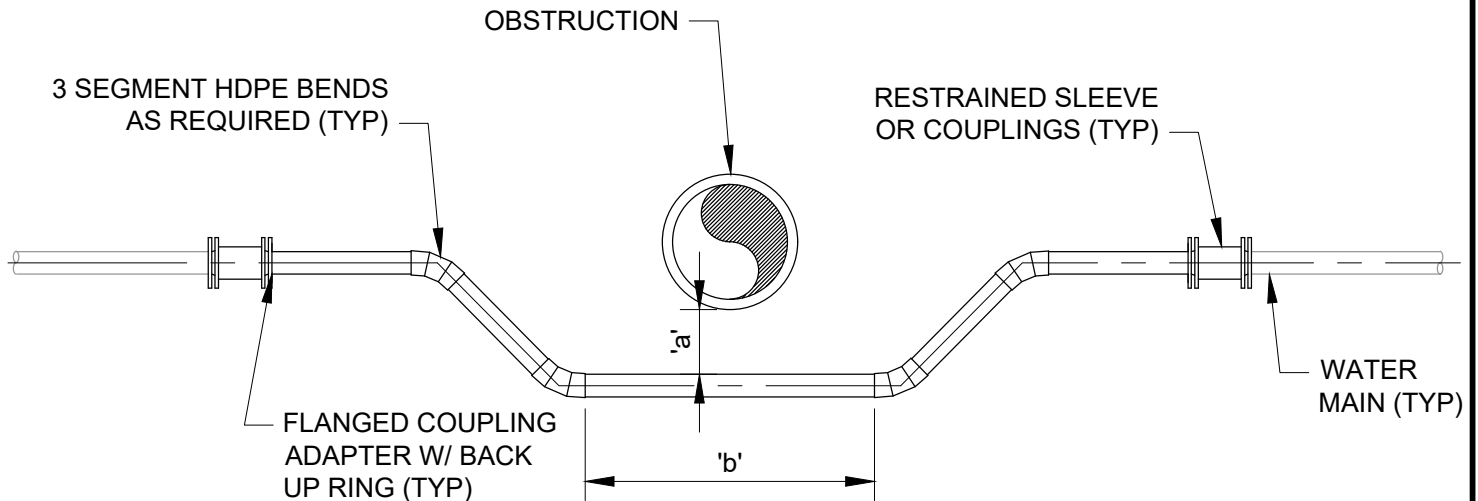


TABLE OF DIMENSIONS		
OBSTRUCTION	'a'	'b'
SEWER	18" MIN	20' MIN
STORM DRAIN OR CULVERT	SEE STD. PLAN 546	O.D. + 6'
OTHER	12" MIN	O.D. + 4'

HDPE METHOD

NOTES:

HDPE PIPE WATERLINE LOOP MINIMUM REQUIREMENTS:

1. NO LOOPS TO BE CONSTRUCTED WITHOUT PRIOR APPROVAL FROM PARK CITY PUBLIC UTILITIES ENGINEER. ALL EFFORTS TO AVOID LOOPS SHOULD BE EXHAUSTED AND ONLY USED AS LAST ALTERNATIVE. LOOPS WILL NOT BE APPROVED ON NEW CONSTRUCTION.
2. GENERAL: PIPE SHALL BE HDPE 4710 DR11 WITH AN INSIDE DIAMETER EQUAL TO OR GREATER THAN THE CONNECTING PIPE ON BOTH ENDS.
3. PIPE SHALL BE FUSION WELDED ALONG LENGTH AND FULLY RESTRAINED AT TRANSITIONS TO DIFFERING PIPE MATERIALS WITH FLANGES OR OTHER CITY APPROVED METHOD.
4. FITTINGS ALONG THE LOOP LENGTH SHALL BE HDPE UNLESS OTHERWISE APPROVED BY OWNER.
5. BENDING RADIUS NOT TO EXCEED PIPE MANUFACTURES RECOMMENDATIONS.
6. REDUCERS AND TRANSITION COUPLINGS SHALL BE PROVIDED ON BOTH ENDS AS REQUIRED AND SHALL BE HDPE OR DUCTILE IRON. CATHODIC PROTECTION REQUIRED ON FERROUS COMPONENTS PER STD. PLAN 534
7. ALL CULINARY WATER MAINS AND LATERALS SHALL BE INSTALLED ABOVE SEWER LINES UNLESS APPROVED BY PARK CITY AND UTAH DIVISION OF DRINKING WATER.



PARK CITY MUNICIPAL CORPORATION
WATER

DATE

03/2024

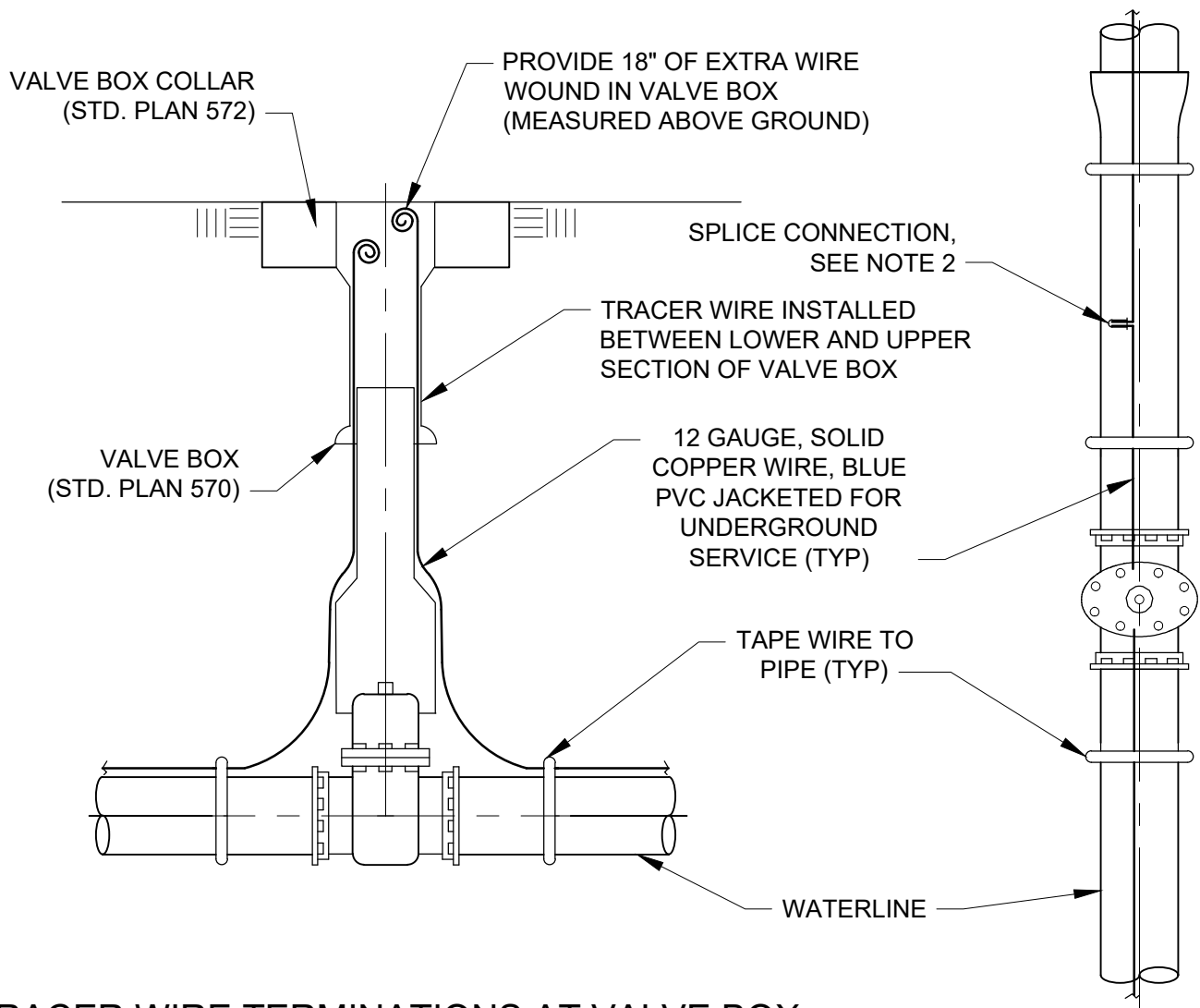
REV.

2

WATER MAIN LOOP

STD. PLAN

544-C



TRACER WIRE TERMINATIONS AT VALVE BOX

NOTES:

1. INSTALL TRACER WIRE ON ALL CONSTRUCTED (METALLIC AND NON-METALLIC) PIPE.
2. ALL SPLICES SHALL BE SILICONE FILLED WIRE CONNECTORS.
3. PROVIDE TRACER WIRE CONNECTIONS AT ALL VALVE BOXES AND PER STD. PLAN 545-B TO MAINTAIN A MAXIMUM DISTANCE BETWEEN CONNECTIONS OF NO GREATER THAN 500 FEET.
4. AT VAULT AND MANHOLE LOCATIONS COIL WIRE INSIDE.



PARK CITY MUNICIPAL CORPORATION
WATER

DATE

03/2023

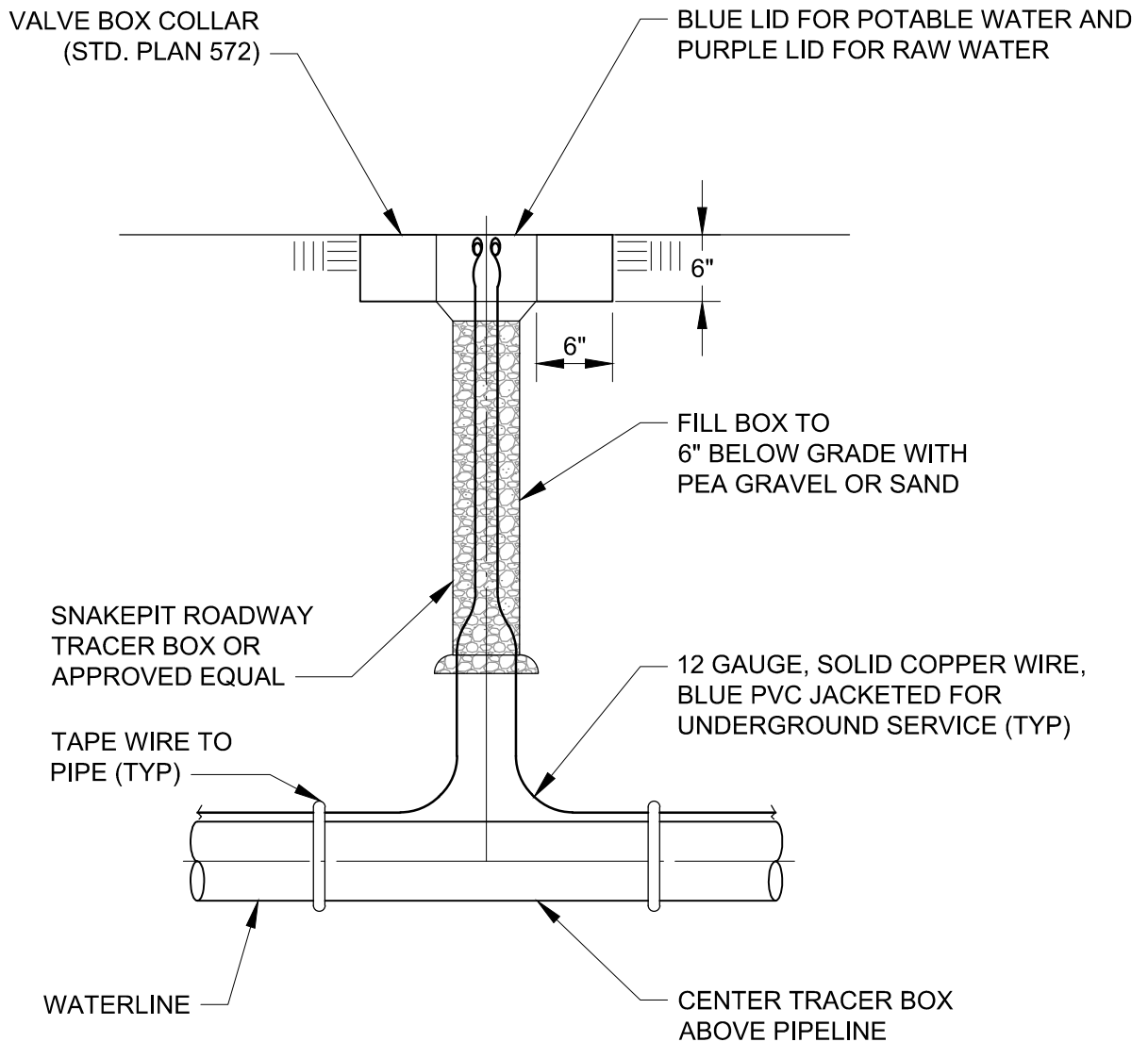
REV.

2

TRACER WIRE VALVE BOX TERMINATIONS

STD. PLAN

545-A



NOTES:

1. INSTALL LOCATOR WIRE ON ALL CONSTRUCTED (METALLIC AND NON-METALLIC) PIPE.
2. ALL SPLICES SHALL BE WITH SILICONE FILLED WIRE CONNECTORS.
3. PROVIDE LOCATOR WIRE CONNECTIONS PER THIS DETAIL AS REQUIRED TO MAINTAIN A MAXIMUM DISTANCE BETWEEN CONNECTIONS OF NO GREATER THAN 500 FEET. CONTRACTOR SHALL COORDINATE EACH LOCATION WITH OWNER.
4. LOCATOR WIRE AND WARNING TAPE NOT REQUIRED WHERE DIRECTIONAL DRILLING WILL TAKE PLACE.
5. AT VAULT LOCATIONS COIL WIRE INSIDE OF VAULT.



PARK CITY MUNICIPAL CORPORATION
WATER

DATE

3/2014

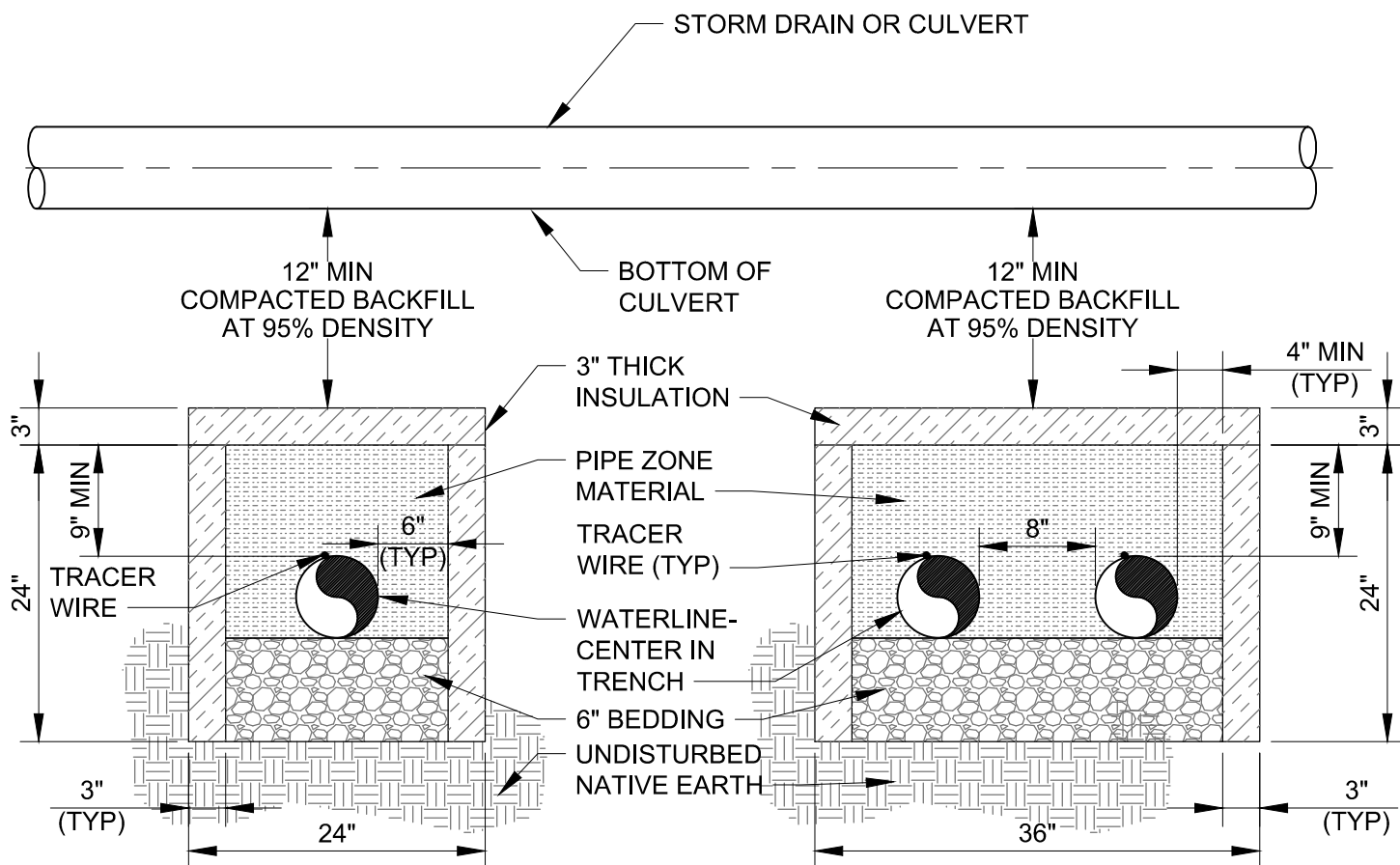
REV.

0

**TRACER WIRE
ACCESS BOX TERMINATIONS**

STD. PLAN

545-B



ONE LINE IN TRENCH

TWO LINES IN TRENCH

NOTES:

1. WHERE WATERLINES INTERSECT STORM DRAINS OR CULVERTS, INSTALL WATERLINE WITH FROST SHIELD. EXTEND FROST SHIELD A MINIMUM OF 3-FEET ON BOTH SIDES STORM DRAIN OR CULVERT.
2. INSULATION SHALL BE 3-INCH THICK INSULATION BOARD (DOW STYROFOAM HIGHLOAD - 60 INSULATION OR APPROVED EQUAL).
3. ALL BACKFILL MATERIAL, INCLUDING SPECIAL BEDDING AND PIPE ZONE MATERIAL, SHALL BE COMPACTED TO AT LEAST 95% DENSITY TO PROVIDE AN ADEQUATE FOUNDATION FOR THE CULVERT AND ROADWAY.
4. INSTALL TRACER WIRES AS REQUIRED (STD. PLAN 540, 541 AND 545)



PARK CITY MUNICIPAL CORPORATION
WATER

DATE

3/2014

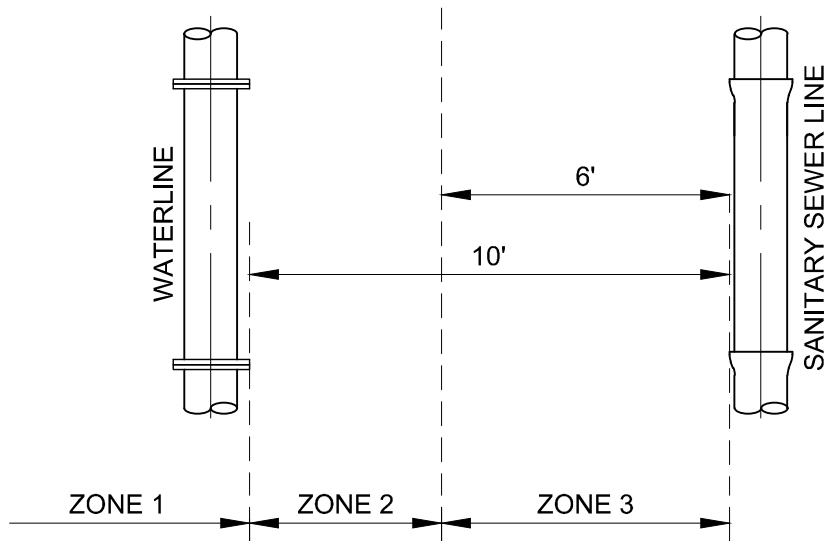
REV.

0

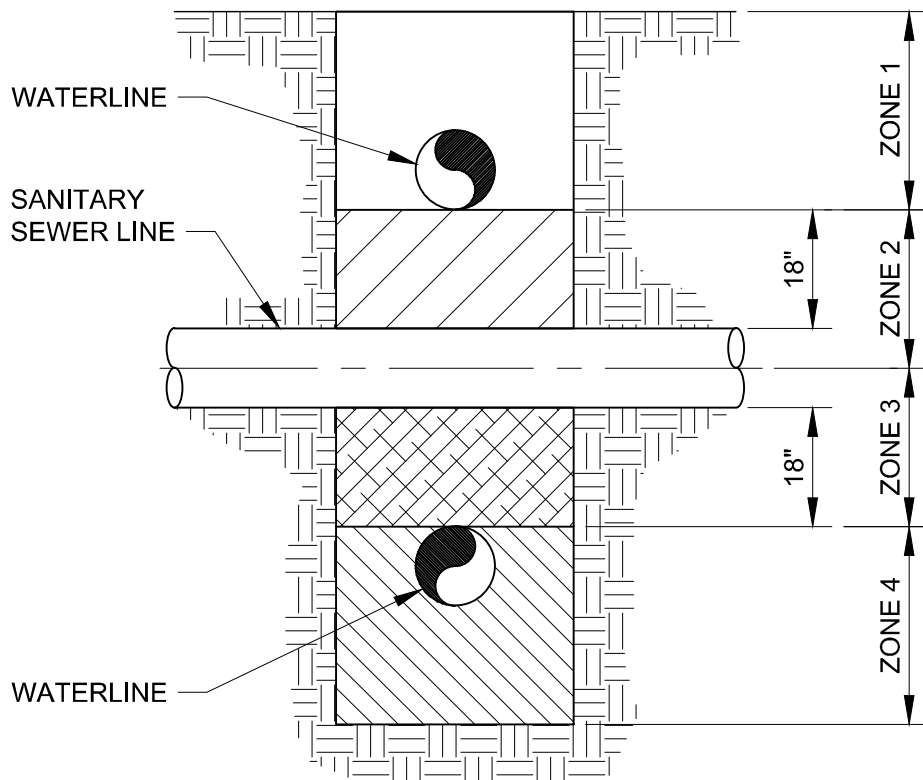
**PIPE INSULATION AT
STORM DRAIN CROSSINGS**

STD. PLAN

546



HORIZONTAL SEPARATION REQUIREMENTS



VERTICAL SEPARATION REQUIREMENTS

NOTES:

1. SEE STD. PLAN 547-B FOR HORIZONTAL AND VERTICAL SEPARATION REQUIREMENT NOTES.
2. ALL CULINARY WATER MAINS AND LATERALS SHALL BE INSTALLED ABOVE SEWER LINES UNLESS APPROVED BY PARK CITY AND UTAH DIVISION OF DRINKING WATER.



PARK CITY MUNICIPAL CORPORATION
WATER

DATE

6/2019

REV.

1

WATER - SANITARY SEWER SEPARATION

STD. PLAN

547-A

HORIZONTAL SEPARATION NOTES:

1. ZONE 1: WATER LINE AND SEWER LINE SEPARATED 10 FEET OR GREATER – NO SPECIAL REQUIREMENTS
ZONE 2: WHERE LOCAL CONDITIONS AND SITE SPECIFIC CONDITIONS PRECLUDE ZONE 1 SEPARATION – SPECIAL REQUIREMENTS APPLY:
A) APPROVAL BY DIVISION OF ENVIRONMENTAL QUALITY, DIVISION OF DRINKING WATER AND,
B) SEWER PIPES IN GOOD CONDITION AND,
C) NO HIGH GROUNDWATER AND,
D) WATER LINE SEPARATED BY AT LEAST 6 FEET AT OUTSIDE PIPE WALLS AND,
E) BOTTOM OF WATER LINE IS AT LEAST 18 INCHES ABOVE TOP OF SEWER LINE AND,
F) WATER LINE CONSTRUCTED WITH MECHANICAL, RESTRAINED JOINT PIPE
ZONE 3: WATER LINE AND SEWER LINE SEPARATED LESS THAN 6 FEET – NOT ALLOWED WITHOUT APPROVAL OF PUBLIC UTILITIES ENGINEER AND APPROVED EXCEPTION TO RULE R309-550-7 BY UTAH DIVISION OF ENVIRONMENTAL QUALITY, DIVISION OF DRINKING WATER. ADDITIONAL MITIGATION MEASURES TO PROTECT PUBLIC HEALTH MAY BE REQUIRED.
2. ADDITIONAL WATER-SEWER SEPARATION AND/OR SPECIAL PIPE MATERIALS MAY BE REQUIRED IN AREAS OF HIGH GROUNDWATER, SOILS CONDITIONS, OR SPECIAL SEWER LINE CONTENTS
3. SERVICE LINE TAPS NOT ALLOWED IN ZONE 2
4. SERVICE LINE TAPS WITHIN ZONE 3 ALLOWED ONLY BY SITE SPECIFIC APPROVAL BY DIVISION OF ENVIRONMENTAL QUALITY, DIVISION OF DRINKING WATER
5. CONSULT SNYDERVILLE BASIN WATER RECLAMATION DISTRICT FOR ADDITIONAL SANITARY SEWER RELATED REQUIREMENTS AND SEWER LINE MODIFICATIONS

VERTICAL SEPARATION NOTES:

1. ZONE 1: WATER LINE ABOVE SEWER LINE AND SEPARATED 18 INCHES OR GREATER – NO SPECIAL REQUIREMENTS
ZONE 2: WATER LINE ABOVE SEWER LINE SEPARATED LESS THAN 18 INCHES – NOT ALLOWED WITHOUT APPROVAL OF PUBLIC UTILITIES ENGINEER AND APPROVED EXCEPTION TO RULE R309-550-7 BY UTAH DIVISION OF ENVIRONMENTAL QUALITY, DIVISION OF DRINKING WATER. ADDITIONAL MITIGATION MEASURES TO PROTECT PUBLIC HEALTH MAY BE REQUIRED SUCH AS: INSTALL CONTROLLED LOW-STRENGTH MATERIAL (CLSM), “FLOWABLE FILL”, 150 PSI MAXIMUM MIX DESIGN WITHIN WATER PIPE ZONE AND TO 18” ABOVE THE SEWER LINE.
ZONE 3: WATER LINE BELOW SEWER LINE SEPARATED LESS THAN 18 INCHES – NOT ALLOWED WITHOUT APPROVAL OF PUBLIC UTILITIES ENGINEER AND APPROVED EXCEPTION TO RULE R309-550-7 BY UTAH DIVISION OF ENVIRONMENTAL QUALITY, DIVISION OF DRINKING WATER. ADDITIONAL MITIGATION MEASURES TO PROTECT PUBLIC HEALTH MAY BE REQUIRED SUCH AS: INSTALL CONTROLLED LOW-STRENGTH MATERIAL (CLSM), “FLOWABLE FILL”, 150 PSI MAXIMUM MIX DESIGN WITHIN WATER PIPE ZONE AND TO 18” ABOVE THE SEWER LINE.
ZONE 4: WATER LINE BELOW SEWER LINE SEPARATED GREATER THAN 18 INCHES – NOT ALLOWED WITHOUT APPROVAL OF PUBLIC UTILITIES ENGINEER AND APPROVED EXCEPTION TO RULE R309-550-7 BY UTAH DIVISION OF ENVIRONMENTAL QUALITY, DIVISION OF DRINKING WATER. ADDITIONAL MITIGATION MEASURES TO PROTECT PUBLIC HEALTH MAY BE REQUIRED SUCH AS: CENTER ONE FULL UN CUT LENGTH OF WATER PIPE OVER THE CROSSING AND PROVIDE MECHANICAL RESTRAINED PIPE JOINTS UNTIL THE WATER PIPE EXTENDS TO A DISTANCE OF 10 FEET PERPENDICULAR TO EACH SIDE OF THE SEWER LINE. INSTALL CONTROLLED LOW-STRENGTH MATERIAL (CLSM), “FLOWABLE FILL”, 150 PSI MAXIMUM MIX DESIGN WITHIN WATER PIPE ZONE AND TO 18” ABOVE THE SEWER LINE.
2. SERVICE LINE TAPS NOT ALLOWED IN ZONES 2 AND 3.
3. MAINTAIN 10 FEET HORIZONTAL SEPARATION AND 18 INCHES VERTICAL SEPARATION ABOVE SANITARY SEWER FORCE MAINS
4. CONSULT SNYDERVILLE BASIN WATER RECLAMATION DISTRICT FOR ADDITIONAL SANITARY SEWER RELATED REQUIREMENTS AND SEWER LINE MODIFICATIONS
5. ALL CULINARY WATER MAINS AND LATERALS SHALL BE INSTALLED ABOVE SEWER LINES UNLESS APPROVED BY THE PUBLIC UTILITIES ENGINEER AND UTAH DIVISION OF DRINKING WATER.



PARK CITY MUNICIPAL CORPORATION
WATER

DATE

5/2025

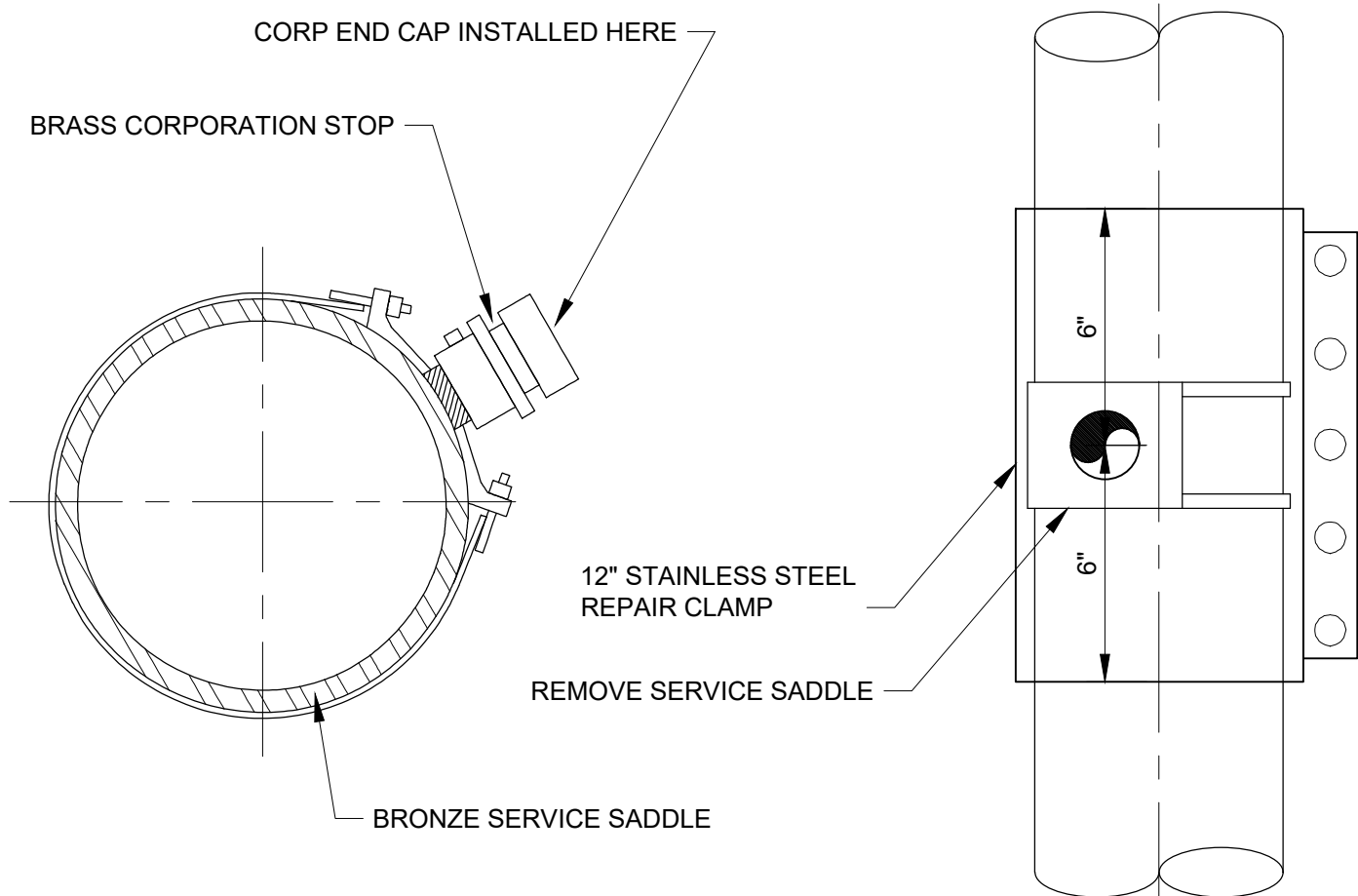
REV.

2

WATER – SANITARY SEWER SEPARATION NOTES

STD. PLAN

547-B



SERVICEABLE SADDLE

NONSERVICEABLE SADDLE

NOTES:

1. IF BOTH THE BRONZE SADDLE AND CORPORATION STOP ARE IN GOOD CONDITION:
 - A. THE CORPORATION IS TO BE SHUT OFF, DISCONNECTED FROM THE SERVICE LATERAL, AND INSPECTED FOR LEAKS
 - B. IF THE BRONZE SADDLE AND CORPORATION STOP ARE IN GOOD CONDITION AND DO NOT LEAK A BRASS END CAP IS TO BE INSTALLED ON THE CORPORATION STOP ($\frac{3}{4}$ " FORD CAP-24-3-NL, 1" FORD CAP-2-4-NL, OR FORD CAP 4-4-NL, 1 $\frac{1}{2}$ "-FORD CAP-2-6-NL OR FORD CAP-4-6-Q-NL) OR APPROVED EQUIVALENTS
 - C. APPLY WAX TAPE COATING SYSTEM TO SERVICE SADDLE BOLTS AND CORPORATION STOP (STD. PLAN 534.2)
2. A WATER SHUTDOWN AND INSTALLATION OF A STAINLESS-STEEL REPAIR CLAMP WILL BE MANDATORY IF, BUT NOT LIMITED TO:
 - A. THE SADDLE IS NOT BRONZE, IS IN POOR CONDITION, OR LEAKS
 - B. THE CORPORATION STOP LEAKS OR IS TAPPED DIRECTLY INTO THE WATER MAIN
 - C. THE SURFACE AREA OF THE WATER MAIN SURROUNDING THE TAP IS IN POOR CONDITION
 - D. APPLY WAX TAPE COATING SYSTEM TO THE ENTIRE STAINLESS STEEL REPAIR CLAMP, THE BAND, BOLTS, AND NUTS (STD. PLAN 534.2)



PARK CITY MUNICIPAL CORPORATION
WATER

DATE

03/2024

REV.

0

**$\frac{3}{4}$ " TO 2" SERVICE LINE
ABANDONMENT**

STD. PLAN

548