

WILDLIFE HABITAT

The State of Utah maintains a list of wildlife species organized by County. These lists are organized by Federal listings and State listings. Following are the lists for wildlife species in Summit County.

Federally Listed – Summit County:

| <u>Common Name</u> | <u>Specific Name</u> | <u>Status</u> |
|--------------------------------------|---------------------------------|---------------|
| Bald Eagle | <i>Haliaeetus leucocephalus</i> | T |
| Yellow-billed Cuckoo - Possibly | <i>Coccyzus americanus</i> | C |
| Black-footed Ferret – Unconfirmed | <i>Mustela nigripes</i> | E Extirpated |
| Brown (Grizzly) Bear – Historically? | <i>Ursus arctos</i> | T Extirpated |
| Canada Lynx | <i>Lynx canadensis</i> | T |

| <u>Symbol</u> | <u>Definition</u> |
|-----------------|--|
| E, T Extirpated | An "endangered" or "threatened" taxon that is "extirpated" and considered by the U.S. Fish and Wildlife Service to no longer occur in Utah. |
| T | A taxon that is listed by the U.S. Fish and Wildlife Service as "threatened" with becoming endangered. |
| C | A taxon for which the U.S. Fish and Wildlife Service has on file sufficient information on biological vulnerability and threats to justify it being a "candidate" for listing as endangered or threatened. |

Created by the Utah Division of Wildlife Resources – 05/21/2004

State Listed – Summit County:

| <u>Common Name</u> | <u>Specific Name</u> | <u>State Status</u> |
|--------------------------------|--|---------------------|
| Bald Eagle | <i>Haliaeetus leucocephalus</i> | S-ESA |
| Bluehead Sucker | <i>Catostomus discobolus</i> | CS |
| Bobolink | <i>Dolichonyx oryzivorus</i> | SPC |
| Bonneville Cutthroat Trout | <i>Oncorhynchus clarki utah</i> | CS |
| Brown (Grizzly) Bear | <i>Ursus arctos</i> | S-ESA |
| Canada Lynx | <i>Lynx canadensis</i> | S-ESA |
| Colorado River Cutthroat Trout | <i>Oncorhynchus clarki pleuriticus</i> | CS |
| Columbia Spotted Frog | <i>Rana luteiventris</i> | CS |
| Desert Mountain Snail | <i>Oreohelix Peripherica</i> | SPC |
| Ferruginous Hawk | <i>Buteo regalis</i> | SPC |
| Greater Sage-Grouse | <i>Centrocercus urophasianus</i> | SPC |
| Leatherside Chub | <i>Gila copei</i> | SPC |
| Lewis's Woodpecker | <i>Melanerpes lewis</i> | SPC |
| Long-Billed Curlew | <i>Numenius americanus</i> | SPC |
| Northern Goshawk | <i>Accipiter gentiles</i> | CS |
| Smooth Greensnake | <i>Opheodrys vernalis</i> | SPC |
| Three-Toed Woodpecker | <i>Picoides tridactylus</i> | SPC |
| Western Pearlshell | <i>Margaritifera falcata</i> | SPC |
| Western Toad | <i>Bufo boreas</i> | SPC |

| <u>Symbol</u> | <u>Definition</u> |
|---------------|---|
| S-ESA | Federally-listed or candidate species under the Endangered Species Act. |

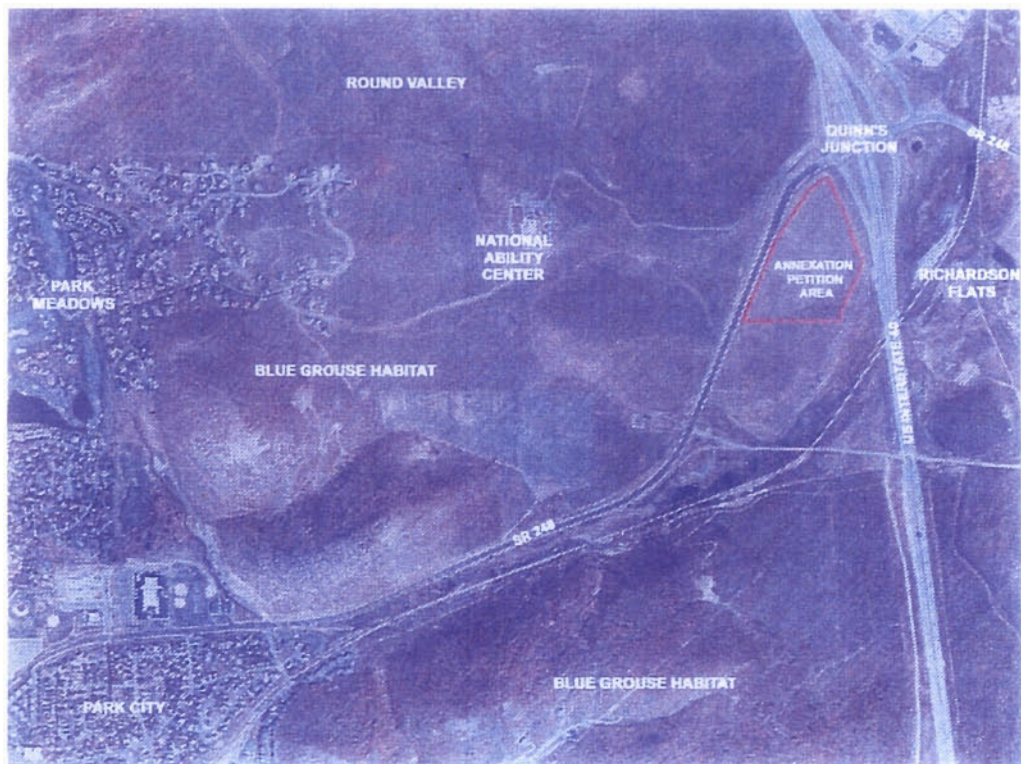
JAN 20 2012

| | |
|-----|--|
| SPC | Wildlife species of concern. |
| CS | Species receiving special management under a Conservation Agreement in order to preclude the need for Federal listing. |

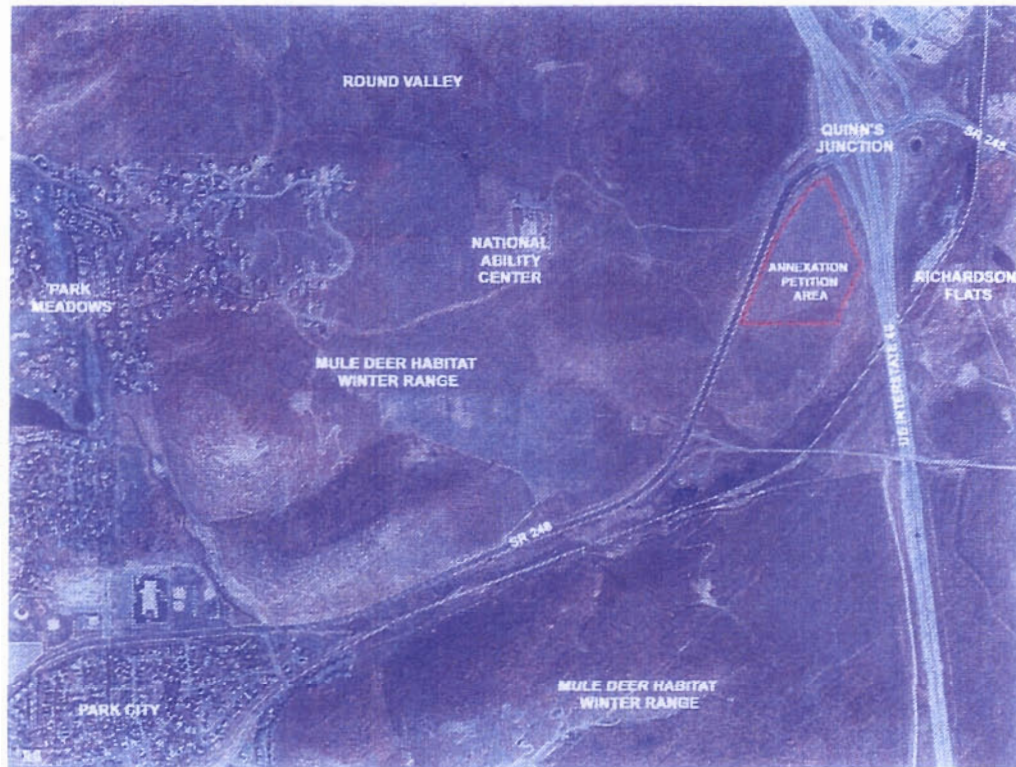
Of the animals Federally and State listed, none of the species make substantive use of the project area. However, a site and species-specific survey would need to be conducted to determine their existence or non-existence within the project area.

Animals of record with the Utah Division of Wildlife Resources that already or may have the potential to occur on the project area include Blue Grouse, Mule Deer, Ruffed Grouse, and Sage-Grouse. Attached are maps provided by the Utah Division of Wildlife Resources, which show the species, type of habitat, and value rating.

Species: Blue Grouse
Habitat: Year Long
Value: Substantial



Species: Mule Deer
Habitat: Summer
Value: High



Species: Ruffed Grouse
Habitat: Year Long
Value: Substantial



Species: Sage-Grouse (Brood)
Habitat:
Value: Undefined



Species: Sage-Grouse
Habitat: Winter
Value: Undefined

